

Product Name: NBPF4 Rabbit Polyclonal Antibody**Catalog #: APRab14426**

For research use only.

Summary

Description	Rabbit polyclonal Antibody
Host	Rabbit
Application	IHC, ICC/IF, ELISA
Reactivity	Human, Rat, Mouse
Conjugation	Unconjugated
Modification	Unmodified
Isotype	IgG
Clonality	Polyclonal
Form	Liquid
Concentration	1mg/ml
Storage	Aliquot and store at -20°C (valid for 12 months). Avoid freeze/thaw cycles.
Shipping	Ice bags
Buffer	Liquid in PBS containing 50% glycerol, 0.5% protective protein and 0.02% New type preservative N.
Purification	Affinity purification

Application

Dilution Ratio IHC 1:100-1:300, ICC/IF 1:50-1:200, ELISA 1:20000-1:40000

Molecular Weight

Antigen Information

Gene Name	NBPF4
Alternative Names	NBPF4; Neuroblastoma breakpoint family member 4
Gene ID	148545.0
SwissProt ID	Q96M43
Immunogen	The antiserum was produced against synthesized peptide derived from human NBPF4. AA range:48-97

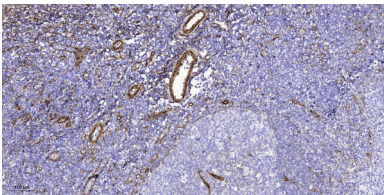
Background

neuroblastoma breakpoint family member 4(NBPF4) Homo sapiens This gene is a member of the neuroblastoma breakpoint

family (NBPF) which consists of dozens of recently duplicated genes primarily located in segmental duplications on human chromosome 1. This gene family has experienced its greatest expansion within the human lineage and has expanded, to a lesser extent, among primates in general. Members of this gene family are characterized by tandemly repeated copies of DUF1220 protein domains. Gene copy number variations in the human chromosomal region 1q21.1, where most DUF1220 domains are located, have been implicated in a number of developmental and neurogenetic diseases such as microcephaly, macrocephaly, autism, schizophrenia, mental retardation, congenital heart disease, neuroblastoma, and congenital kidney and urinary tract anomalies. Altered expression of some gene family members is associated with several types of cancer. This gene family is encoded by one of the numerous copies of NBPF genes clustered in the p36, p12 and q21 region of the chromosome 1. Similarity: Belongs to the NBPF family. Similarity: Contains 3 NBPF domains. Tissue specificity: Expressed in testis.

Research Area

Image Data



Immunohistochemical analysis of paraffin-embedded human tonsil. 1, Tris-EDTA, pH 9.0 was used for antigen retrieval. 2 Antibody was diluted at 1:200 (4° overnight). 3, Secondary antibody was diluted at 1:200 (room temperature, 45min).