
Product Name: NBEAL1 Rabbit Polyclonal Antibody**Catalog #: APRab14422**

For research use only.

Summary

Description	Rabbit polyclonal Antibody
Host	Rabbit
Application	WB,IHC,ICC/IF,ELISA
Reactivity	Human,Rat,Mouse
Conjugation	Unconjugated
Modification	Unmodified
Isotype	IgG
Clonality	Polyclonal
Form	Liquid
Concentration	1mg/ml
Storage	Aliquot and store at -20°C (valid for 12 months). Avoid freeze/thaw cycles.
Shipping	Ice bags
Buffer	Liquid in PBS containing 50% glycerol, 0.5% protective protein and 0.02% New type preservative N.
Purification	Affinity purification

Application

Dilution Ratio	WB 1:500-1:2000,IHC 1:100-1:300,ICC/IF 1:50-1:200,ELISA 1:5000-1:20000
Molecular Weight	160kDa

Antigen Information

Gene Name	NBEAL1 NBEAL1; ALS2CR16; ALS2CR17; Neurobeachin-like protein 1; Amyotrophic lateral sclerosis 2
Alternative Names	chromosomal region candidate gene 16 protein; Amyotrophic lateral sclerosis 2 chromosomal region candidate gene 17 protein
Gene ID	65065.0
SwissProt ID	Q6ZS30
Immunogen	The antiserum was produced against synthesized peptide derived from human NBEAL1. AA range:566-615

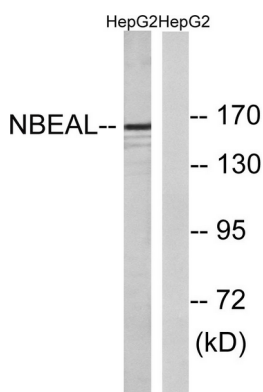
Background

sequence caution:Translated as stop.,similarity:Belongs to the WD repeat neurobeachin family.,similarity:Contains 1 BEACH domain.,similarity:Contains 2 WD repeats.,tissue specificity:Highly expressed in brain, kidney, prostate and testis. Weakly expressed in ovary, small intestine, colon and peripheral blood leukocytes. May be correlative to several tumors, such as ovary serous adenocarcinoma and metastasis mammary gland carcinoma breast.,sequence caution:Translated as stop.,similarity:Belongs to the WD repeat neurobeachin family.,similarity:Contains 1 BEACH domain.,similarity:Contains 2 WD repeats.,tissue specificity:Highly expressed in brain, kidney, prostate and testis. Weakly expressed in ovary, small intestine, colon and peripheral blood leukocytes. May be correlative to several tumors, such as ovary serous adenocarcinoma and metastasis mammary gland carcinoma breast.,

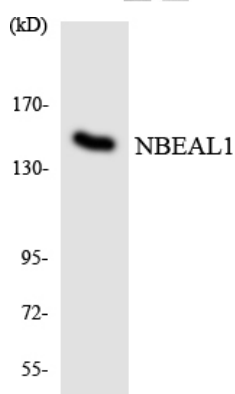
Research Area

Cell Biology; Other Antibodies; Cancer; Tumor biomarkers

Image Data



Western blot analysis of lysates from HepG2 cells, using NBEAL1 Antibody. The lane on the right is blocked with the synthesized peptide.



Western blot analysis of the lysates from HeLa cells using NBEAL1 antibody.