
Product Name: NARFL Rabbit Polyclonal Antibody**Catalog #: APRab14410**

For research use only.

Summary

Description	Rabbit polyclonal Antibody
Host	Rabbit
Application	WB,IHC,ICC/IF,ELISA
Reactivity	Human,Rat,Mouse
Conjugation	Unconjugated
Modification	Unmodified
Isotype	IgG
Clonality	Polyclonal
Form	Liquid
Concentration	1mg/ml
Storage	Aliquot and store at -20°C (valid for 12 months). Avoid freeze/thaw cycles.
Shipping	Ice bags
Buffer	Liquid in PBS containing 50% glycerol, 0.5% protective protein and 0.02% New type preservative N.
Purification	Affinity purification

Application

Dilution Ratio	WB 1:500-1:2000,IHC 1:100-1:300,ICC/IF 1:50-1:200,ELISA 1:20000-1:40000
Molecular Weight	50kDa

Antigen Information

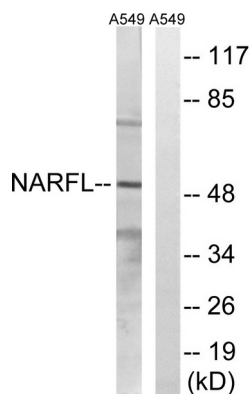
Gene Name	NARFL
Alternative Names	NARFL; PRN; Cytosolic Fe-S cluster assembly factor NARFL; Iron-only hydrogenase-like protein 1; IOP1; Nuclear prelamin A recognition factor-like protein; Protein related to Narf
Gene ID	64428.0
SwissProt ID	Q9H6Q4
Immunogen	The antiserum was produced against synthesized peptide derived from human NARFL. AA range:387-436

Background

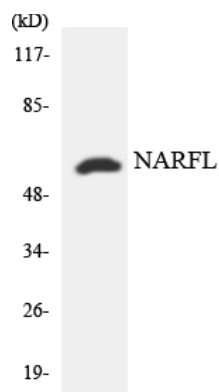
function:Regulates HIF1A expression.,similarity:Belongs to the NARF family.,tissue specificity:Widely expressed.,function:Regulates HIF1A expression.,similarity:Belongs to the NARF family.,tissue specificity:Widely expressed.,

Research Area

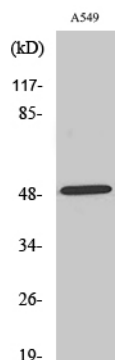
Image Data



Western blot analysis of lysates from A549 cells, using NARFL Antibody. The lane on the right is blocked with the synthesized peptide.



Western blot analysis of the lysates from HeLa cells using NARFL antibody.



Western Blot analysis of various cells using NARFL Polyclonal Antibody.