

---

**Product Name: NARF Rabbit Polyclonal Antibody****Catalog #: APRab14409**

For research use only.

**Summary**

<b>Description</b>	Rabbit polyclonal Antibody
<b>Host</b>	Rabbit
<b>Application</b>	WB,IHC,ELISA
<b>Reactivity</b>	Human,Rat,Mouse
<b>Conjugation</b>	Unconjugated
<b>Modification</b>	Unmodified
<b>Isotype</b>	IgG
<b>Clonality</b>	Polyclonal
<b>Form</b>	Liquid
<b>Concentration</b>	1mg/ml
<b>Storage</b>	Aliquot and store at -20°C (valid for 12 months). Avoid freeze/thaw cycles.
<b>Shipping</b>	Ice bags
<b>Buffer</b>	Liquid in PBS containing 50% glycerol, 0.5% protective protein and 0.02% New type preservative N.
<b>Purification</b>	Affinity purification

**Application**

<b>Dilution Ratio</b>	WB 1:500-1:2000,IHC 1:50-1:300,ELISA 1:2000-1:20000
<b>Molecular Weight</b>	51kDa

**Antigen Information**

<b>Gene Name</b>	NARF
<b>Alternative Names</b>	NARF; Nuclear prelamin A recognition factor; Iron-only hydrogenase-like protein 2; IOP2
<b>Gene ID</b>	26502.0
<b>SwissProt ID</b>	Q9UHQ1
<b>Immunogen</b>	The antiserum was produced against synthesized peptide derived from human NARF. AA range:262-311

**Background**

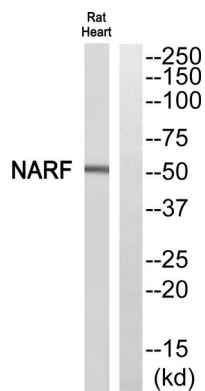
Several proteins have been found to be prenylated and methylated at their carboxyl-terminal ends. Prenylation was initially

believed to be important only for membrane attachment. However, another role for prenylation appears to be its importance in protein-protein interactions. The only nuclear proteins known to be prenylated in mammalian cells are prelamin A- and B-type lamins. Prelamin A is farnesylated and carboxymethylated on the cysteine residue of a carboxyl-terminal CaaX motif. This post-translationally modified cysteine residue is removed from prelamin A when it is endoproteolytically processed into mature lamin A. The protein encoded by this gene binds to the prenylated prelamin A carboxyl-terminal tail domain. It may be a component of a prelamin A endoprotease complex. The encoded protein is located in the nucleus, where it partially colocalizes with the nuclear lamina. ItPTM:Phosphorylated upon DNA damage, probably by ATM or ATR.,similarity:Belongs to the NARF family.,subunit:Interacts with LMNA and binds to the farnesylated C-terminal domain.,tissue specificity:Ubiquitous. Predominantly expressed in skeletal muscle, heart and brain.,

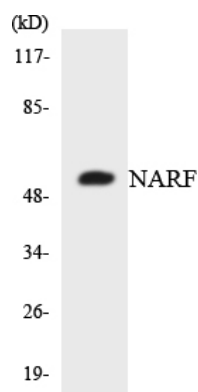
## Research Area

Transcription; Domain Families; Zinc Finger; Cell Biology; Proteolysis / Ubiquitin; Proteasome / Ubiquitin; Ubiquitin E3 Enzymes; RING Finger E3 Ligase; Epigenetics and Nuclear Signaling; Cell cycle; Ubiquitin ligases

## Image Data



Western blot analysis of NARF Antibody. The lane on the right is blocked with the NARF peptide.



Western blot analysis of the lysates from 293 cells using NARF antibody.