
Product Name: Na⁺ CP type II β Rabbit Polyclonal Antibody**Catalog #: APRab14373**

For research use only.

Summary

Description	Rabbit polyclonal Antibody
Host	Rabbit
Application	WB,IHC,ELISA
Reactivity	Human,Mouse,Rat
Conjugation	Unconjugated
Modification	Unmodified
Isotype	IgG
Clonality	Polyclonal
Form	Liquid
Concentration	1mg/ml
Storage	Aliquot and store at -20°C (valid for 12 months). Avoid freeze/thaw cycles.
Shipping	Ice bags
Buffer	Liquid in PBS containing 50% glycerol, 0.5% protective protein and 0.02% New type preservative N.
Purification	Affinity purification

Application

Dilution Ratio	WB 1:500-1:2000,IHC 1:50-1:300,ELISA 1:2000-1:20000
Molecular Weight	24kDa

Antigen Information

Gene Name	SCN2B
Alternative Names	SCN2B; Sodium channel subunit beta-2
Gene ID	6327.0
SwissProt ID	O60939
Immunogen	The antiserum was produced against synthesized peptide derived from human SCN2B. AA range:71-120

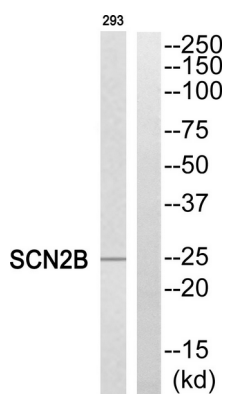
Background

The protein encoded by this gene is the beta 2 subunit of the type II voltage-gated sodium channel. The encoded protein is

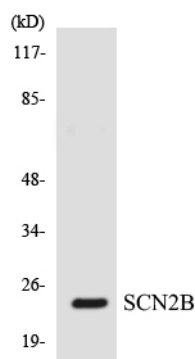
involved in cell-cell adhesion and cell migration. Defects in this gene can be a cause of Brugada Syndrome, atrial fibrillation, or sudden infant death syndrome. [provided by RefSeq, Jul 2015],function:Crucial in the assembly, expression, and functional modulation of the heterotrimeric complex of the sodium channel. The subunit beta-2 causes an increase in the plasma membrane surface area and in its folding into microvilli. Interacts with TNR may play a crucial role in clustering and regulation of activity of sodium channels at nodes of Ranvier.,similarity:Contains 1 Ig-like C2-type (immunoglobulin-like) domain.,subunit:The sodium channel consists of a pore-forming alpha subunit, beta-1 and beta-2 subunits. Beta-1 is non-covalently associated with alpha, while beta-2 is covalently linked by disulfide bonds. Interaction with SCN10A and TNR.,tissue specificity:Brain specific.,

Research Area

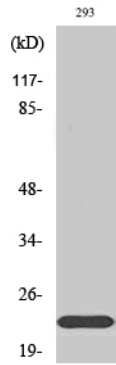
Image Data



Western blot analysis of SCN2B Antibody. The lane on the right is blocked with the SCN2B peptide.



Western blot analysis of the lysates from HepG2 cells using SCN2B antibody.



Western Blot analysis of various cells using Na⁺ CP type II β Polyclonal Antibody