

---

**Product Name: MYL4 Rabbit Polyclonal Antibody****Catalog #: APRab14308**

For research use only.

**Summary**

<b>Description</b>	Rabbit polyclonal Antibody
<b>Host</b>	Rabbit
<b>Application</b>	WB,ELISA
<b>Reactivity</b>	Human,Mouse,Rat
<b>Conjugation</b>	Unconjugated
<b>Modification</b>	Unmodified
<b>Isotype</b>	IgG
<b>Clonality</b>	Polyclonal
<b>Form</b>	Liquid
<b>Concentration</b>	1mg/ml
<b>Storage</b>	Aliquot and store at -20°C (valid for 12 months). Avoid freeze/thaw cycles.
<b>Shipping</b>	Ice bags
<b>Buffer</b>	Liquid in PBS containing 50% glycerol, and 0.02% New type preservative N.
<b>Purification</b>	Affinity purification

**Application**

<b>Dilution Ratio</b>	WB 1:500-1:2000,ELISA 1:5000-1:20000
<b>Molecular Weight</b>	21kDa

**Antigen Information**

<b>Gene Name</b>	MYL4 MLC1 PRO1957
<b>Alternative Names</b>	
<b>Gene ID</b>	4635.0
<b>SwissProt ID</b>	P12829
<b>Immunogen</b>	Synthesized peptide derived from human protein . at AA range: 1-80

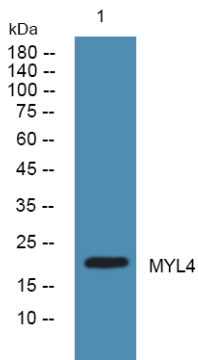
**Background**

Myosin is a hexameric ATPase cellular motor protein. It is composed of two myosin heavy chains, two nonphosphorylatable myosin alkali light chains, and two phosphorylatable myosin regulatory light chains. This gene encodes a myosin alkali light chain that is found in embryonic muscle and adult atria. Two alternatively spliced transcript variants encoding the same protein

have been found for this gene. [provided by RefSeq, Jul 2008],function:Regulatory light chain of myosin. Does not bind calcium.,similarity:Contains 3 EF-hand domains.,subunit:Myosin is an hexamer of 2 heavy chains and 4 light chains.,

## Research Area

## Image Data



Western blot analysis of lysates from KB cells, MYL4 Rabbit Polyclonal Antibody was diluted at 1:1000, 4° over night