

**Product Name: MYH15 Rabbit Polyclonal Antibody****Catalog #: APRab14293**

For research use only.

**Summary**

<b>Description</b>	Rabbit polyclonal Antibody
<b>Host</b>	Rabbit
<b>Application</b>	WB,IHC
<b>Reactivity</b>	Human,Rat,Mouse
<b>Conjugation</b>	Unconjugated
<b>Modification</b>	Unmodified
<b>Isotype</b>	IgG
<b>Clonality</b>	Polyclonal
<b>Form</b>	Liquid
<b>Concentration</b>	1mg/ml
<b>Storage</b>	Aliquot and store at -20°C (valid for 12 months). Avoid freeze/thaw cycles.
<b>Shipping</b>	Ice bags
<b>Buffer</b>	Liquid in PBS containing 50% glycerol, 0.5% protective protein and 0.02% New type preservative N.
<b>Purification</b>	Affinity purification

**Application**

<b>Dilution Ratio</b>	WB 1:500-1:2000,IHC 1:50-1:300
<b>Molecular Weight</b>	225kDa

**Antigen Information**

<b>Gene Name</b>	MYH15
<b>Alternative Names</b>	MYH15; KIAA1000; Myosin-15; Myosin heavy chain 15
<b>Gene ID</b>	22989.0
<b>SwissProt ID</b>	Q9Y2K3
<b>Immunogen</b>	The antiserum was produced against synthesized peptide derived from human MYH15. AA range:624-673

**Background**

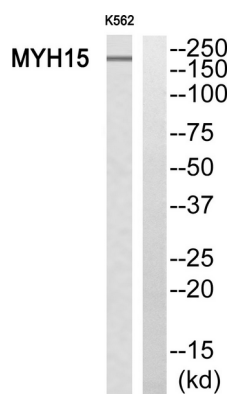
domain:The rodlike tail sequence is highly repetitive, showing cycles of a 28-residue repeat pattern composed of 4

heptapeptides, characteristic for alpha-helical coiled coils.,function:Muscle contraction.,similarity:Contains 1 IQ domain.,similarity:Contains 1 myosin head-like domain.,subcellular location:Thick filaments of the myofibrils.,subunit:Muscle myosin is a hexameric protein that consists of 2 heavy chain subunits (MHC), 2 alkali light chain subunits (MLC) and 2 regulatory light chain subunits (MLC-2).,domain:The rodlike tail sequence is highly repetitive, showing cycles of a 28-residue repeat pattern composed of 4 heptapeptides, characteristic for alpha-helical coiled coils.,function:Muscle contraction.,similarity:Contains 1 IQ domain.,similarity:Contains 1 myosin head-like domain.,subcellular location:Thick filaments of the myofibrils.,subunit:Muscle myosin is a hexameric protein that consists of 2 heavy chain subunits (MHC), 2 alkali light chain subunits (MLC) and 2 regulatory light chain subunits (MLC-2).,

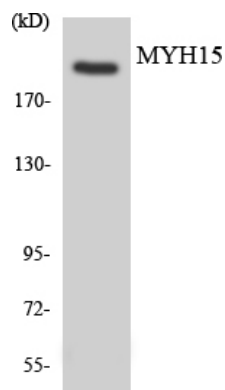
## Research Area

Tight junction;Viral myocarditis;

## Image Data



Western blot analysis of MYH15 Antibody. The lane on the right is blocked with the MYH15 peptide.



Western blot analysis of the lysates from Jurkat cells using MYH15 antibody.