

---

**Product Name: MUM1 Rabbit Polyclonal Antibody****Catalog #: APRab14243**

For research use only.

**Summary**

<b>Description</b>	Rabbit polyclonal Antibody
<b>Host</b>	Rabbit
<b>Application</b>	WB,IHC,ELISA
<b>Reactivity</b>	Human,Mouse,Rat
<b>Conjugation</b>	Unconjugated
<b>Modification</b>	Unmodified
<b>Isotype</b>	IgG
<b>Clonality</b>	Polyclonal
<b>Form</b>	Liquid
<b>Concentration</b>	1mg/ml
<b>Storage</b>	Aliquot and store at -20°C (valid for 12 months). Avoid freeze/thaw cycles.
<b>Shipping</b>	Ice bags
<b>Buffer</b>	Liquid in PBS containing 50% glycerol, 0.5% protective protein and 0.02% New type preservative N.
<b>Purification</b>	Affinity purification

**Application**

<b>Dilution Ratio</b>	WB 1:500-1:2000,IHC 1:50-1:300,ELISA 1:2000-1:20000
<b>Molecular Weight</b>	78kDa

**Antigen Information**

<b>Gene Name</b>	MUM1 EXPAND1
<b>Alternative Names</b>	melanoma associated antigen (mutated) 1
<b>Gene ID</b>	84939.0
<b>SwissProt ID</b>	Q2TAK8
<b>Immunogen</b>	The antiserum was produced against synthesized peptide derived from the C-terminal region of human MUM1. AA range:661-710

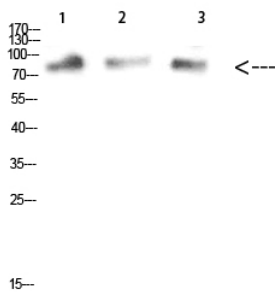
**Background**

PTM:Phosphorylated upon DNA damage, probably by ATM or ATR.,similarity:Belongs to the MUM1

family.,PTM:Phosphorylated upon DNA damage, probably by ATM or ATR.,similarity:Belongs to the MUM1 family.,

## Research Area

## Image Data



Western Blot analysis of mouse-kidney mouse-heart mouse-brain cells using MUM1 Polyclonal Antibody diluted at 1:1000. Secondary antibody was diluted at 1:20000

1,mouse-kidney 2,mouse-heart 3,mouse-brain