

---

**Product Name: Mucin 13 Rabbit Polyclonal Antibody****Catalog #: APRab14239**

For research use only.

**Summary**

<b>Description</b>	Rabbit polyclonal Antibody
<b>Host</b>	Rabbit
<b>Application</b>	WB,IHC,ICC/IF,ELISA
<b>Reactivity</b>	Human,Rat,Mouse
<b>Conjugation</b>	Unconjugated
<b>Modification</b>	Unmodified
<b>Isotype</b>	IgG
<b>Clonality</b>	Polyclonal
<b>Form</b>	Liquid
<b>Concentration</b>	1mg/ml
<b>Storage</b>	Aliquot and store at -20°C (valid for 12 months). Avoid freeze/thaw cycles.
<b>Shipping</b>	Ice bags
<b>Buffer</b>	Liquid in PBS containing 50% glycerol, 0.5% protective protein and 0.02% New type preservative N.
<b>Purification</b>	Affinity purification

**Application**

<b>Dilution Ratio</b>	WB 1:500-1:2000,IHC 1:100-1:300,ICC/IF 1:200-1:1000,ELISA 1:10000-1:20000
<b>Molecular Weight</b>	50kDa

**Antigen Information**

<b>Gene Name</b>	MUC13
<b>Alternative Names</b>	MUC13; DRCC1; RECC; Mucin-13; MUC-13; Down-regulated in colon cancer 1
<b>Gene ID</b>	56667.0
<b>SwissProt ID</b>	Q9H3R2
<b>Immunogen</b>	The antiserum was produced against synthesized peptide derived from human MUC13. AA range:421-470

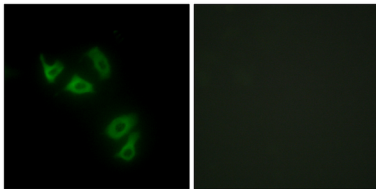
**Background**

Epithelial mucins, such as MUC13, are a family of secreted and cell surface glycoproteins expressed by ductal and glandular

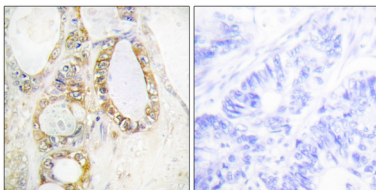
epithelial tissues (Williams et al., 2001 [PubMed 11278439]).[supplied by OMIM, Jul 2008],function:Epithelial and hemopoietic transmembrane mucin that may play a role in cell signaling.,PTM:Cleaved into two subunits, alpha and beta, probably between the first EGF domain and the SEA domain. Beta subunit contains the cytoplasmic tail and alpha subunit the extracellular tail. The homo-oligomerization into dimers is dependent on intrachain disulfide bonds.,PTM:Highly N-glycosylated.,similarity:Contains 1 SEA domain.,similarity:Contains 3 EGF-like domains.,subcellular location:Also exists as a soluble form.,subunit:Homodimer of beta subunits.,tissue specificity:Highly expressed in epithelial tissues, particularly those of the gastrointestinal and respiratory tracts, such as large intestine and trachea, followed by kidney, small intestine, appendix and stomach.,

## Research Area

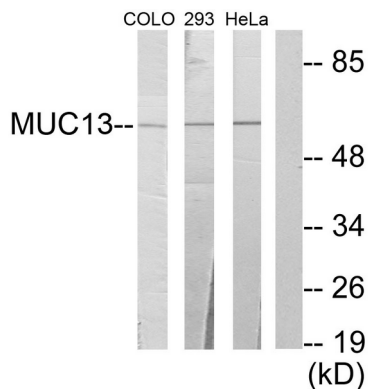
### Image Data



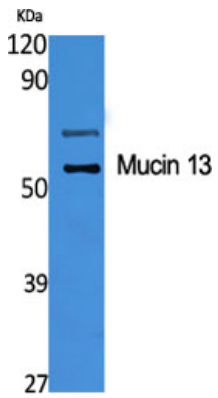
Immunofluorescence analysis of HepG2 cells, using MUC13 Antibody. The picture on the right is blocked with the synthesized peptide.



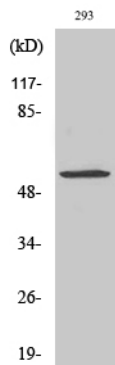
Immunohistochemistry analysis of paraffin-embedded human colon carcinoma tissue, using MUC13 Antibody. The picture on the right is blocked with the synthesized peptide.



Western blot analysis of lysates from 293, HeLa, and COLO205 cells, using MUC13 Antibody. The lane on the right is blocked with the synthesized peptide.



Western Blot analysis of various cells using Mucin 13 Polyclonal Antibody diluted at 1: 1000



Western Blot analysis of COLO205 cells using Mucin 13 Polyclonal Antibody diluted at 1: 1000