
Product Name: mTERF Rabbit Polyclonal Antibody**Catalog #: APRab14208**

For research use only.

Summary

Description	Rabbit polyclonal Antibody
Host	Rabbit
Application	WB,IHC,ICC/IF,ELISA
Reactivity	Human,Rat,Mouse
Conjugation	Unconjugated
Modification	Unmodified
Isotype	IgG
Clonality	Polyclonal
Form	Liquid
Concentration	1mg/ml
Storage	Aliquot and store at -20°C (valid for 12 months). Avoid freeze/thaw cycles.
Shipping	Ice bags
Buffer	Liquid in PBS containing 50% glycerol, 0.5% protective protein and 0.02% New type preservative N.
Purification	Affinity purification

Application

Dilution Ratio	WB 1:500-1:2000,IHC 1:100-1:300,ICC/IF 1:50-1:200,ELISA 1:5000-1:20000
Molecular Weight	46kDa

Antigen Information

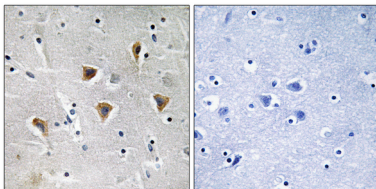
Gene Name	MTERF
Alternative Names	MTERF; Transcription termination factor; mitochondrial; Mitochondrial transcription termination factor 1; mTERF
Gene ID	7978.0
SwissProt ID	Q99551
Immunogen	The antiserum was produced against synthesized peptide derived from human MTERF. AA range:267-316

Background

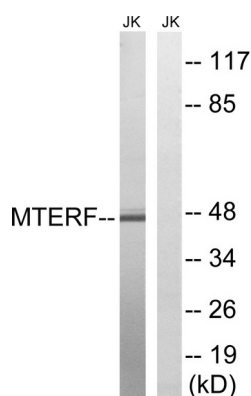
This gene encodes a mitochondrial transcription termination factor. This protein participates in attenuating transcription from the mitochondrial genome; this attenuation allows higher levels of expression of 16S ribosomal RNA relative to the tRNA gene downstream. The product of this gene has three leucine zipper motifs bracketed by two basic domains that are all required for DNA binding. There is evidence that, for this protein, the zippers participate in intramolecular interactions that establish the three-dimensional structure required for DNA binding. [provided by RefSeq, Jul 2008],domain:Composed of three leucine zippers, one of which is bipartite, and two widely spaced basic domains. There is evidence that the leucine zippers form an intramolecular three-stranded coiled-coil that brings the basic domains together to form a DNA-binding motif.,function:Transcription termination factor. Binds to a 28 bp region within the tRNA(Leu(uur)) gene at a position immediately adjacent to and downstream of the 16S rRNA gene, this region comprises a tridecamer sequence critical for directing accurate termination. Probably requires one or more components for termination activity.,PTM:Phosphoprotein with mostly four phosphate groups. While the DNA-binding activity is unaffected by the phosphorylation state, only the phosphorylated form of the protein is active for termination activity. Functioning seems to be regulated by phosphorylation.,similarity:Belongs to the mTERF family.,subunit:Monomer.,

Research Area

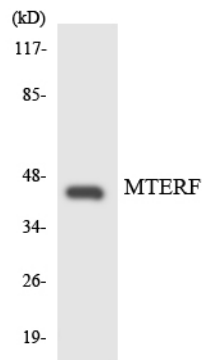
Image Data



Immunohistochemistry analysis of paraffin-embedded human brain tissue, using MTERF Antibody. The picture on the right is blocked with the synthesized peptide.



Western blot analysis of lysates from Jurkat cells, using MTERF Antibody. The lane on the right is blocked with the synthesized peptide.



Western blot analysis of the lysates from HUVEC cells using MTERF antibody.