

**Product Name: MST-3 Rabbit Polyclonal Antibody****Catalog #: APRab14187**

For research use only.

**Summary**

<b>Description</b>	Rabbit polyclonal Antibody
<b>Host</b>	Rabbit
<b>Application</b>	WB,IHC,ICC/IF,ELISA
<b>Reactivity</b>	Human,Mouse,Rat
<b>Conjugation</b>	Unconjugated
<b>Modification</b>	Unmodified
<b>Isotype</b>	IgG
<b>Clonality</b>	Polyclonal
<b>Form</b>	Liquid
<b>Concentration</b>	1mg/ml
<b>Storage</b>	Aliquot and store at -20°C (valid for 12 months). Avoid freeze/thaw cycles.
<b>Shipping</b>	Ice bags
<b>Buffer</b>	Liquid in PBS containing 50% glycerol, 0.5% protective protein and 0.02% New type preservative N.
<b>Purification</b>	Affinity purification

**Application**

<b>Dilution Ratio</b>	WB 1:500-1:2000,IHC 1:100-1:300,ICC/IF 1:50-1:200,ELISA 1:20000-1:40000
<b>Molecular Weight</b>	50kDa

**Antigen Information**

<b>Gene Name</b>	STK24
<b>Alternative Names</b>	STK24; MST3; STK3; Serine/threonine-protein kinase 24; Mammalian STE20-like protein kinase 3; MST-3; STE20-like kinase MST3
<b>Gene ID</b>	8428.0
<b>SwissProt ID</b>	Q9Y6E0
<b>Immunogen</b>	The antiserum was produced against synthesized peptide derived from human STK24. AA range:319-368

**Background**

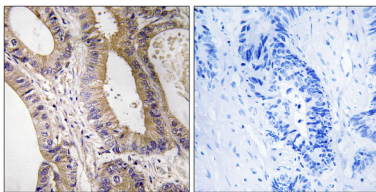


This gene encodes a serine/threonine protein kinase that functions upstream of mitogen-activated protein kinase (MAPK) signaling. The encoded protein is cleaved into two chains by caspases; the N-terminal fragment (MST3/N) translocates to the nucleus and promotes programmed cells death. There is a pseudogene for this gene on chromosome X. Alternative splicing results in multiple transcript variants. [provided by RefSeq, Nov 2013],catalytic activity:ATP + a protein = ADP + a phosphoprotein.,cofactor:Manganese. Only isoform A requires manganese.,function:Protein kinase that act on both serine and threonine residues.,PTM:Autophosphorylated. Isoform B is activated by phosphorylation by PKA.,similarity:Belongs to the protein kinase superfamily. STE Ser/Thr protein kinase family. STE20 subfamily.,similarity:Contains 1 protein kinase domain.,tissue specificity:Isoform A is ubiquitous. Isoform B is expressed in brain with high expression in hippocampus and cerebral cortex.,

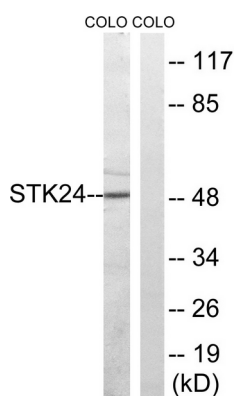
## Research Area

Neuroscience

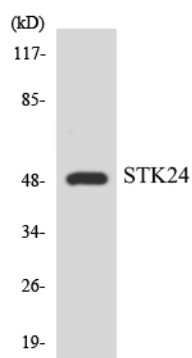
## Image Data



Immunohistochemistry analysis of paraffin-embedded human colon carcinoma tissue, using STK24 Antibody. The picture on the right is blocked with the synthesized peptide.

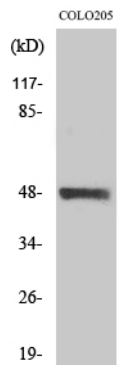


Western blot analysis of lysates from COLO cells, using STK24 Antibody. The lane on the right is blocked with the synthesized peptide.



Western blot analysis of the lysates from COLO205 cells using STK24 antibody.





Western Blot analysis of various cells using MST-3 Polyclonal Antibody diluted at 1: 1000