
Product Name: MRP-S34 Rabbit Polyclonal Antibody**Catalog #: APRab14155**

For research use only.

Summary

Description	Rabbit polyclonal Antibody
Host	Rabbit
Application	WB,IHC,ELISA
Reactivity	Human,Mouse
Conjugation	Unconjugated
Modification	Unmodified
Isotype	IgG
Clonality	Polyclonal
Form	Liquid
Concentration	1mg/ml
Storage	Aliquot and store at -20°C (valid for 12 months). Avoid freeze/thaw cycles.
Shipping	Ice bags
Buffer	Liquid in PBS containing 50% glycerol, 0.5% protective protein and 0.02% New type preservative N.
Purification	Affinity purification

Application

Dilution Ratio	WB 1:500-1:2000,IHC 1:50-1:300,ELISA 1:2000-1:20000
Molecular Weight	26kDa

Antigen Information

Gene Name	MRPS34
Alternative Names	MRPS34; 28S ribosomal protein S34; mitochondrial; MRP-S34; S34mt
Gene ID	65993.0
SwissProt ID	P82930
Immunogen	The antiserum was produced against synthesized peptide derived from human MRPS34. AA range:169-218

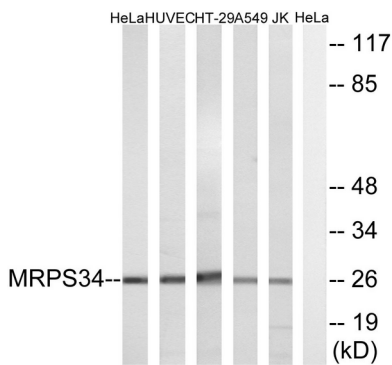
Background

Mammalian mitochondrial ribosomal proteins are encoded by nuclear genes and help in protein synthesis within the

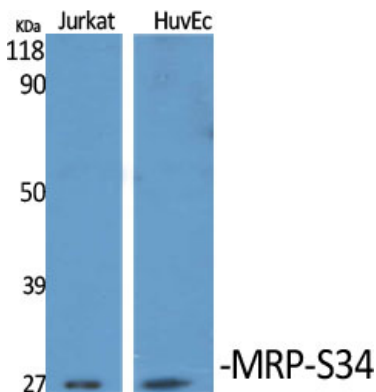
mitochondrion. Mitochondrial ribosomes (mitoribosomes) consist of a small 28S subunit and a large 39S subunit. They have an estimated 75% protein to rRNA composition compared to prokaryotic ribosomes, where this ratio is reversed. Another difference between mammalian mitoribosomes and prokaryotic ribosomes is that the latter contain a 5S rRNA. Among different species, the proteins comprising the mitoribosome differ greatly in sequence, and sometimes in biochemical properties, which prevents easy recognition by sequence homology. This gene encodes a 28S subunit protein. Alternative splicing results in multiple transcript variants. [provided by RefSeq, Jul 2014],subunit:Component of the mitochondrial ribosome small subunit (28S) which comprises a 12S rRNA and about 30 distinct proteins,

Research Area

Image Data



Western blot analysis of lysates from HeLa, HUVEC, HT-29, A549, and Jurkat cells, using MRPS34 Antibody. The lane on the right is blocked with the synthesized peptide.



Western Blot analysis of various cells using MRP-S34 Polyclonal Antibody diluted at 1: 1000



Western Blot analysis of Jurkat cells using MRP-S34 Polyclonal Antibody diluted at 1 : 1000

