

Product Name: MRP-S27 Rabbit Polyclonal Antibody**Catalog #: APRab14150**

For research use only.

Summary

Description	Rabbit polyclonal Antibody
Host	Rabbit
Application	WB,IHC,ELISA
Reactivity	Human,Rat,Mouse
Conjugation	Unconjugated
Modification	Unmodified
Isotype	IgG
Clonality	Polyclonal
Form	Liquid
Concentration	1mg/ml
Storage	Aliquot and store at -20°C (valid for 12 months). Avoid freeze/thaw cycles.
Shipping	Ice bags
Buffer	Liquid in PBS containing 50% glycerol, 0.5% protective protein and 0.02% New type preservative N.
Purification	Affinity purification

Application

Dilution Ratio	WB 1:500-1:2000,IHC 1:50-1:300,ELISA 1:2000-1:20000
Molecular Weight	48kDa

Antigen Information

Gene Name	MRPS27
Alternative Names	MRPS27; KIAA0264; 28S ribosomal protein S27; mitochondrial; MRP-S27; S27mt
Gene ID	23107.0
SwissProt ID	Q92552
Immunogen	The antiserum was produced against synthesized peptide derived from human MRPS27. AA range:16-65

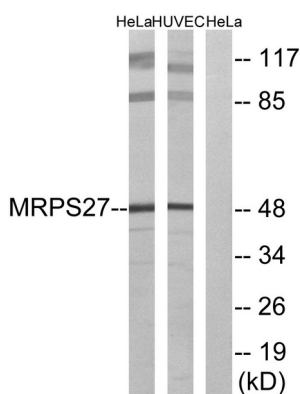
Background

Mammalian mitochondrial ribosomal proteins are encoded by nuclear genes and help in protein synthesis within the

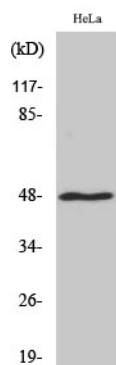
mitochondrion. Mitochondrial ribosomes (mitoribosomes) consist of a small 28S subunit and a large 39S subunit. They have an estimated 75% protein to rRNA composition compared to prokaryotic ribosomes, where this ratio is reversed. Another difference between mammalian mitoribosomes and prokaryotic ribosomes is that the latter contain a 5S rRNA. Among different species, the proteins comprising the mitoribosome differ greatly in sequence, and sometimes in biochemical properties, which prevents easy recognition by sequence homology. This gene encodes a 28S subunit protein that may be a functional partner of the death associated protein 3 (DAP3). Alternative splicing results in multiple transcript variants encoding different isoforms. [provided by RefSeq, Nov 2013],similarity:Contains 2 PPR (pentatricopeptide) repeats.,subunit:Component of the mitochondrial ribosome small subunit (28S) which comprises a 12S rRNA and about 30 distinct proteins.,

Research Area

Image Data



Western blot analysis of lysates from HeLa and HUVEC cells, using MRPS27 Antibody. The lane on the right is blocked with the synthesized peptide.



Western Blot analysis of various cells using MRP-S27 Polyclonal Antibody