

**Product Name: MRP-S24 Rabbit Polyclonal Antibody****Catalog #: APRab14148**

For research use only.

**Summary**

<b>Description</b>	Rabbit polyclonal Antibody
<b>Host</b>	Rabbit
<b>Application</b>	IHC, ICC/IF, ELISA
<b>Reactivity</b>	Human, Mouse, Rat
<b>Conjugation</b>	Unconjugated
<b>Modification</b>	Unmodified
<b>Isotype</b>	IgG
<b>Clonality</b>	Polyclonal
<b>Form</b>	Liquid
<b>Concentration</b>	1mg/ml
<b>Storage</b>	Aliquot and store at -20°C (valid for 12 months). Avoid freeze/thaw cycles.
<b>Shipping</b>	Ice bags
<b>Buffer</b>	Liquid in PBS containing 50% glycerol, 0.5% protective protein and 0.02% New type preservative N.
<b>Purification</b>	Affinity purification

**Application**

**Dilution Ratio** IHC 1:100-1:300, ICC/IF 1:50-1:200, ELISA 1:20000-1:40000

**Molecular Weight**

**Antigen Information**

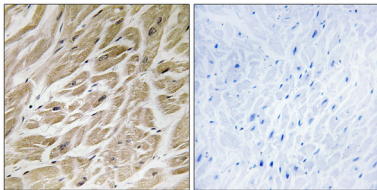
<b>Gene Name</b>	MRPS24
<b>Alternative Names</b>	MRPS24; HSPC335; 28S ribosomal protein S24; mitochondrial; MRP-S24; S24mt; bMRP-47; bMRP47
<b>Gene ID</b>	64951.0
<b>SwissProt ID</b>	Q96EL2
<b>Immunogen</b>	The antiserum was produced against synthesized peptide derived from human MRPS24. AA range:51-100

**Background**

Mammalian mitochondrial ribosomal proteins are encoded by nuclear genes and help in protein synthesis within the mitochondrion. Mitochondrial ribosomes (mitoribosomes) consist of a small 28S subunit and a large 39S subunit. They have an estimated 75% protein to rRNA composition compared to prokaryotic ribosomes, where this ratio is reversed. Another difference between mammalian mitoribosomes and prokaryotic ribosomes is that the latter contain a 5S rRNA. Among different species, the proteins comprising the mitoribosome differ greatly in sequence, and sometimes in biochemical properties, which prevents easy recognition by sequence homology. This gene encodes a 28S subunit protein. A pseudogene corresponding to this gene is found on chromosome 11. Read-through transcription exists between this gene and the upstream upregulator of cell proliferation (URGCP) gene. [provided by RefSeq, Masubunit:Component of the mitochondrial ribosome small subunit (28S) which comprises a 12S rRNA and about 30 distinct proteins,

## Research Area

## Image Data



Immunohistochemistry analysis of paraffin-embedded human heart tissue, using MRPS24 Antibody. The picture on the right is blocked with the synthesized peptide.