

Product Name: MRP-S18A Rabbit Polyclonal Antibody**Catalog #: APRab14143**

For research use only.

Summary

Description	Rabbit polyclonal Antibody
Host	Rabbit
Application	IHC, ICC/IF, ELISA
Reactivity	Human, Mouse, Rat
Conjugation	Unconjugated
Modification	Unmodified
Isotype	IgG
Clonality	Polyclonal
Form	Liquid
Concentration	1mg/ml
Storage	Aliquot and store at -20°C (valid for 12 months). Avoid freeze/thaw cycles.
Shipping	Ice bags
Buffer	Liquid in PBS containing 50% glycerol, 0.5% protective protein and 0.02% New type preservative N.
Purification	Affinity purification

Application

Dilution Ratio	IHC 1:100-1:300, ICC/IF 1:50-1:200, ELISA 1:20000-1:40000
Molecular Weight	27-30kDa

Antigen Information

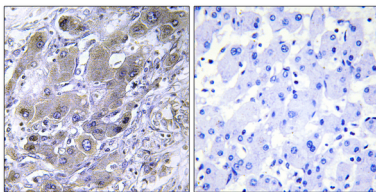
Gene Name	MRPS18A
Alternative Names	MRPS18A; 28S ribosomal protein S18a; mitochondrial; MRP-S18-a; Mrps18a; S18mt-a; 28S ribosomal protein S18-3, mitochondrial; MRP-S18-3
Gene ID	55168.0
SwissProt ID	Q9NVS2
Immunogen	The antiserum was produced against synthesized peptide derived from human MRPS18A. AA range:81-130

Background

Mammalian mitochondrial ribosomal proteins are encoded by nuclear genes and help in protein synthesis within the mitochondrion. Mitochondrial ribosomes (mitoribosomes) consist of a small 28S subunit and a large 39S subunit. They have an estimated 75% protein to rRNA composition compared to prokaryotic ribosomes, where this ratio is reversed. Another difference between mammalian mitoribosomes and prokaryotic ribosomes is that the latter contain a 5S rRNA. Among different species, the proteins comprising the mitoribosome differ greatly in sequence, and sometimes in biochemical properties, which prevents easy recognition by sequence homology. This gene encodes a 28S subunit protein that belongs to the ribosomal protein S18P family. The encoded protein is one of three that has significant sequence similarity to bacterial S18 proteins. The primary sequences of the three human mitochondriasimilarity:Belongs to the ribosomal protein S18P family.,subunit:Component of the mitochondrial ribosome small subunit (28S) which comprises a 12S rRNA and about 30 distinct proteins.,

Research Area

Image Data



Immunohistochemistry analysis of paraffin-embedded human liver carcinoma tissue, using MRPS18A Antibody. The picture on the right is blocked with the synthesized peptide.