

**Product Name: MRP-S12 Rabbit Polyclonal Antibody****Catalog #: APRab14140**

For research use only.

**Summary**

<b>Description</b>	Rabbit polyclonal Antibody
<b>Host</b>	Rabbit
<b>Application</b>	WB,IHC
<b>Reactivity</b>	Human,Mouse
<b>Conjugation</b>	Unconjugated
<b>Modification</b>	Unmodified
<b>Isotype</b>	IgG
<b>Clonality</b>	Polyclonal
<b>Form</b>	Liquid
<b>Concentration</b>	1mg/ml
<b>Storage</b>	Aliquot and store at -20°C (valid for 12 months). Avoid freeze/thaw cycles.
<b>Shipping</b>	Ice bags
<b>Buffer</b>	Liquid in PBS containing 50% glycerol, 0.5% protective protein and 0.02% New type preservative N.
<b>Purification</b>	Affinity purification

**Application**

<b>Dilution Ratio</b>	WB 1:500-1:2000,IHC 1:50-1:300
<b>Molecular Weight</b>	20kDa

**Antigen Information**

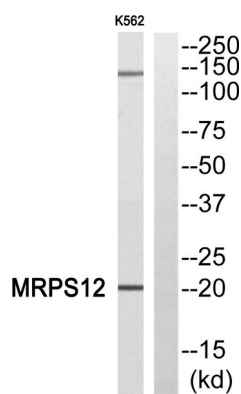
<b>Gene Name</b>	MRPS12
<b>Alternative Names</b>	MRPS12; RPMS12; RPSM12; 28S ribosomal protein S12; mitochondrial; MRP-S12; S12mt; MT-RPS12
<b>Gene ID</b>	6183.0
<b>SwissProt ID</b>	O15235
<b>Immunogen</b>	The antiserum was produced against synthesized peptide derived from human MRPS12. AA range:21-70

**Background**

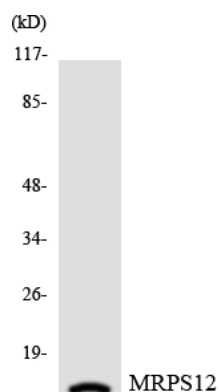
Mammalian mitochondrial ribosomal proteins are encoded by nuclear genes and help in protein synthesis within the mitochondrion. Mitochondrial ribosomes (mitoribosomes) consist of a small 28S subunit and a large 39S subunit. They have an estimated 75% protein to rRNA composition compared to prokaryotic ribosomes, where this ratio is reversed. Another difference between mammalian mitoribosomes and prokaryotic ribosomes is that the latter contain a 5S rRNA. Among different species, the proteins comprising the mitoribosome differ greatly in sequence, and sometimes in biochemical properties, which prevents easy recognition by sequence homology. This gene encodes a 28S subunit protein that belongs to the ribosomal protein S12P family. The encoded protein is a key component of the ribosomal small subunit and controls the decoding fidelity and susceptibility to aminoglycoside antibiotics. This similarity: Belongs to the ribosomal protein S12P family, subunit: Component of the mitochondrial ribosome small subunit (28S) which comprises a 12S rRNA and about 30 distinct proteins.,

## Research Area

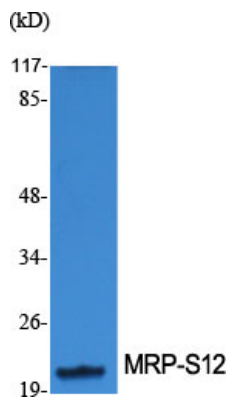
## Image Data



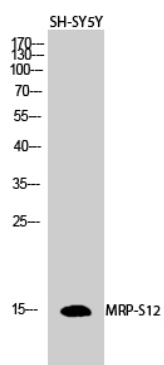
Western blot analysis of MRPS12 Antibody. The lane on the right is blocked with the MRPS12 peptide.



Western blot analysis of the lysates from HepG2 cells using MRPS12 antibody.



Western Blot analysis of various cells using MRP-S12 Polyclonal Antibody diluted at 1: 1000



Western Blot analysis of SH-SY5Y cells using MRP-S12 Polyclonal Antibody diluted at 1: 1000