

**Product Name: MRP-L50 Rabbit Polyclonal Antibody****Catalog #: APRab14135**

For research use only.

**Summary**

|                      |   |
|----------------------|---|
| <b>Description</b>   | Rabbit polyclonal Antibody  |
| <b>Host</b>          | Rabbit  |
| <b>Application</b>   | WB,IHC,ELISA  |
| <b>Reactivity</b>    | Human,Rat,Mouse   |
| <b>Conjugation</b>   | Unconjugated  |
| <b>Modification</b>  | Unmodified  |
| <b>Isotype</b>       | IgG   |
| <b>Clonality</b>     | Polyclonal  |
| <b>Form</b>          | Liquid  |
| <b>Concentration</b> | 1mg/ml  |
| <b>Storage</b>       | Aliquot and store at -20°C (valid for 12 months). Avoid freeze/thaw cycles.                       |
| <b>Shipping</b>      | Ice bags  |
| <b>Buffer</b>        | Liquid in PBS containing 50% glycerol, 0.5% protective protein and 0.02% New type preservative N. |
| <b>Purification</b>  | Affinity purification   |

**Application**

|                         |   |
|-------------------------|---|
| <b>Dilution Ratio</b>   | WB 1:500-1:2000,IHC 1:50-1:300,ELISA 1:2000-1:20000 |
| <b>Molecular Weight</b> | 22kDa   |

**Antigen Information**

|                          |  |
|--------------------------|--|
| <b>Gene Name</b>         | MRPL50   |
| <b>Alternative Names</b> | MRPL50; 39S ribosomal protein L50; mitochondrial; L50mt; MRP-L50                                   |
| <b>Gene ID</b>           | 54534.0  |
| <b>SwissProt ID</b>      | Q8N5N7   |
| <b>Immunogen</b>         | The antiserum was produced against synthesized peptide derived from human MRPL50. AA range:109-158 |

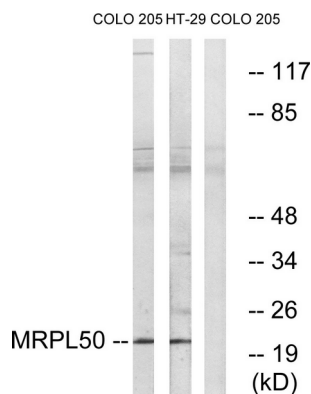
**Background**

Mammalian mitochondrial ribosomal proteins are encoded by nuclear genes and help in protein synthesis within the

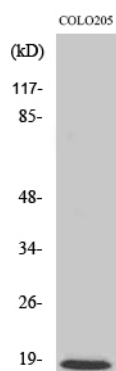
mitochondrion. Mitochondrial ribosomes (mitoribosomes) consist of a small 28S subunit and a large 39S subunit. They have an estimated 75% protein to rRNA composition compared to prokaryotic ribosomes, where this ratio is reversed. Another difference between mammalian mitoribosomes and prokaryotic ribosomes is that the latter contain a 5S rRNA. Among different species, the proteins comprising the mitoribosome differ greatly in sequence, and sometimes in biochemical properties, which prevents easy recognition by sequence homology. This gene encodes a putative 39S subunit protein and belongs to the L47P ribosomal protein family. Pseudogenes corresponding to this gene are found on chromosomes 2p, 2q, 5p, and 10q. [provided by RefSeq, Jul 2008],

## Research Area

## Image Data



Western blot analysis of lysates from COLO and HT-29 cells, using MRPL50 Antibody. The lane on the right is blocked with the synthesized peptide.



Western Blot analysis of various cells using MRP-L50 Polyclonal Antibody