
Product Name: MRP-L39 Rabbit Polyclonal Antibody**Catalog #: APRab14126**

For research use only.

Summary

Description	Rabbit polyclonal Antibody
Host	Rabbit
Application	WB,IHC,ICC/IF,ELISA
Reactivity	Human,Rat,Mouse
Conjugation	Unconjugated
Modification	Unmodified
Isotype	IgG
Clonality	Polyclonal
Form	Liquid
Concentration	1mg/ml
Storage	Aliquot and store at -20°C (valid for 12 months). Avoid freeze/thaw cycles.
Shipping	Ice bags
Buffer	Liquid in PBS containing 50% glycerol, 0.5% protective protein and 0.02% New type preservative N.
Purification	Affinity purification

Application

Dilution Ratio	WB 1:500-1:2000,IHC 1:100-1:300,ICC/IF 1:50-1:200,ELISA 1:20000-1:40000
Molecular Weight	39kDa

Antigen Information

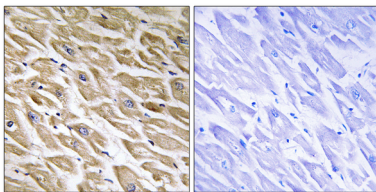
Gene Name	MRPL39
Alternative Names	MRPL39; C21orf92; MRPL5; RPML5; MSTP003; PRED22; 39S ribosomal protein L39; mitochondrial; L39mt; MRP-L39; 39S ribosomal protein L5, mitochondrial; L5mt; MRP-L5
Gene ID	54148.0
SwissProt ID	Q9NYK5
Immunogen	The antiserum was produced against synthesized peptide derived from human MRPL39. AA range:289-338

Background

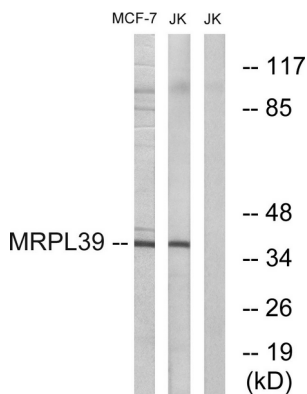
Mammalian mitochondrial ribosomal proteins are encoded by nuclear genes and help in protein synthesis within the mitochondrion. Mitochondrial ribosomes (mitoribosomes) consist of a small 28S subunit and a large 39S subunit. They have an estimated 75% protein to rRNA composition compared to prokaryotic ribosomes, where this ratio is reversed. Another difference between mammalian mitoribosomes and prokaryotic ribosomes is that the latter contain a 5S rRNA. Among different species, the proteins comprising the mitoribosome differ greatly in sequence, and sometimes in biochemical properties, which prevents easy recognition by sequence homology. This gene encodes a 39S subunit protein. Two transcript variants encoding distinct isoforms have been described. A pseudogene corresponding to this gene is found on chromosome 5q. [provided by RefSeq, Jul 2008],caution:It is uncertain whether Met-1 or Met-6 is the initiator.,caution:Ref.1 indicates C21orf8 as a synonym for this orf, this is incorrect, C21orf8 is already assigned to another chromosome 21 region.,similarity:To the N-terminal of threonyl-tRNA synthetases.,tissue specificity:Ubiquitous (isoform 1); heart-specific (isoform 2),,

Research Area

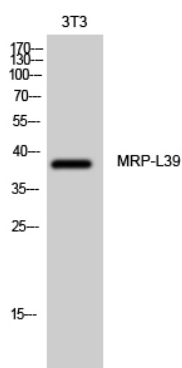
Image Data



Immunohistochemistry analysis of paraffin-embedded human heart tissue, using MRPL39 Antibody. The picture on the right is blocked with the synthesized peptide.



Western blot analysis of lysates from Jurkat and MCF-7 cells, using MRPL39 Antibody. The lane on the right is blocked with the synthesized peptide.



Western Blot analysis of 3T3 cells using MRP-L39 Polyclonal Antibody diluted at 1:1000

