

Product Name: MRP-L3 Rabbit Polyclonal Antibody**Catalog #: APRab14121**

For research use only.

Summary

Description	Rabbit polyclonal Antibody
Host	Rabbit
Application	WB,IHC,ELISA
Reactivity	Human,Rat,Mouse
Conjugation	Unconjugated
Modification	Unmodified
Isotype	IgG
Clonality	Polyclonal
Form	Liquid
Concentration	1mg/ml
Storage	Aliquot and store at -20°C (valid for 12 months). Avoid freeze/thaw cycles.
Shipping	Ice bags
Buffer	Liquid in PBS containing 50% glycerol, 0.5% protective protein and 0.02% New type preservative N.
Purification	Affinity purification

Application

Dilution Ratio	WB 1:500-1:2000,IHC 1:50-1:300,ELISA 1:2000-1:20000
Molecular Weight	38kDa

Antigen Information

Gene Name	MRPL3
Alternative Names	MRPL3; MRL3; RPML3; 39S ribosomal protein L3; mitochondrial; L3mt; MRP-L3
Gene ID	11222.0
SwissProt ID	P09001
Immunogen	Synthesized peptide derived from MRP-L3 . at AA range: 20-100

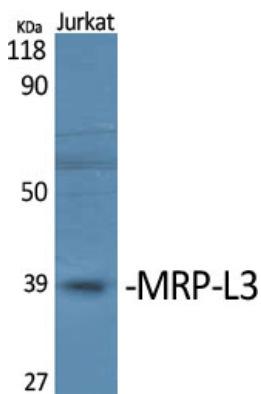
Background

Mammalian mitochondrial ribosomal proteins are encoded by nuclear genes and help in protein synthesis within the mitochondrion. Mitochondrial ribosomes (mitoribosomes) consist of a small 28S subunit and a large 39S subunit. They have an

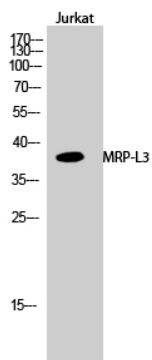
estimated 75% protein to rRNA composition compared to prokaryotic ribosomes, where this ratio is reversed. Another difference between mammalian mitoribosomes and prokaryotic ribosomes is that the latter contain a 5S rRNA. Among different species, the proteins comprising the mitoribosome differ greatly in sequence, and sometimes in biochemical properties, which prevents easy recognition by sequence homology. This gene encodes a 39S subunit protein that belongs to the L3P ribosomal protein family. A pseudogene corresponding to this gene is found on chromosome 13q. [provided by RefSeq, Jul 2008],similarity:Belongs to the ribosomal protein L3P family.,

Research Area

Image Data



Western Blot analysis of various cells using MRP-L3 Polyclonal Antibody



Western Blot analysis of Jurkat cells using MRP-L3 Polyclonal Antibody