

---

**Product Name: MRP-L21 Rabbit Polyclonal Antibody****Catalog #: APRab14118**

For research use only.

**Summary**

<b>Description</b>	Rabbit polyclonal Antibody
<b>Host</b>	Rabbit
<b>Application</b>	WB,IHC,ICC/IF,ELISA
<b>Reactivity</b>	Human,Mouse
<b>Conjugation</b>	Unconjugated
<b>Modification</b>	Unmodified
<b>Isotype</b>	IgG
<b>Clonality</b>	Polyclonal
<b>Form</b>	Liquid
<b>Concentration</b>	1mg/ml
<b>Storage</b>	Aliquot and store at -20°C (valid for 12 months). Avoid freeze/thaw cycles.
<b>Shipping</b>	Ice bags
<b>Buffer</b>	Liquid in PBS containing 50% glycerol, 0.5% protective protein and 0.02% New type preservative N.
<b>Purification</b>	Affinity purification

**Application**

<b>Dilution Ratio</b>	WB 1:500-1:2000,IHC 1:100-1:300,ICC/IF 1:50-1:200,ELISA 1:20000-1:40000
<b>Molecular Weight</b>	23kDa

**Antigen Information**

<b>Gene Name</b>	MRPL21
<b>Alternative Names</b>	MRPL21; 39S ribosomal protein L21; mitochondrial; L21mt; MRP-L21
<b>Gene ID</b>	219927.0
<b>SwissProt ID</b>	Q7Z2W9
<b>Immunogen</b>	The antiserum was produced against synthesized peptide derived from human MRPL21. AA range:131-180

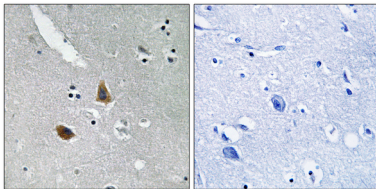
**Background**

Mammalian mitochondrial ribosomal proteins are encoded by nuclear genes and help in protein synthesis within the

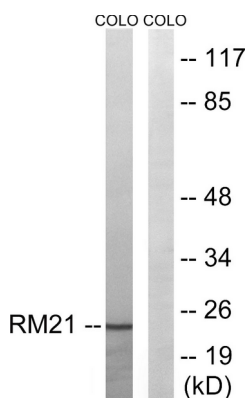
mitochondrion. Mitochondrial ribosomes (mitoribosomes) consist of a small 28S subunit and a large 39S subunit. They have an estimated 75% protein to rRNA composition compared to prokaryotic ribosomes, where this ratio is reversed. Another difference between mammalian mitoribosomes and prokaryotic ribosomes is that the latter contain a 5S rRNA. Among different species, the proteins comprising the mitoribosome differ greatly in sequence, and sometimes in biochemical properties, which prevents easy recognition by sequence homology. This gene encodes a 39S subunit protein. Multiple transcript variants encoding different isoforms were identified through sequence analysis although some may be subject to nonsense-mediated decay (NMD). [provided by RefSeq, Jul 2008],similarity:Belongs to the ribosomal protein L21P family.,

## Research Area

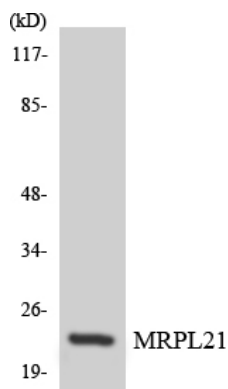
## Image Data



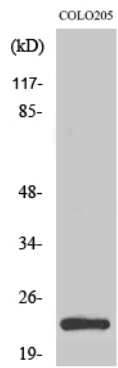
Immunohistochemistry analysis of paraffin-embedded human brain tissue, using MRPL21 Antibody. The picture on the right is blocked with the synthesized peptide.



Western blot analysis of lysates from COLO cells, using MRPL21 Antibody. The lane on the right is blocked with the synthesized peptide.



Western blot analysis of the lysates from HeLa cells using MRPL21 antibody.



Western Blot analysis of various cells using MRP-L21 Polyclonal Antibody diluted at 1: 2000