

Product Name: MRP-L18 Rabbit Polyclonal Antibody**Catalog #: APRab14116**

For research use only.

Summary

Description	Rabbit polyclonal Antibody
Host	Rabbit
Application	WB,IHC,ICC/IF,ELISA
Reactivity	Human,Rat,Mouse
Conjugation	Unconjugated
Modification	Unmodified
Isotype	IgG
Clonality	Polyclonal
Form	Liquid
Concentration	1mg/ml
Storage	Aliquot and store at -20°C (valid for 12 months). Avoid freeze/thaw cycles.
Shipping	Ice bags
Buffer	Liquid in PBS containing 50% glycerol, 0.5% protective protein and 0.02% New type preservative N.
Purification	Affinity purification

Application

Dilution Ratio	WB 1:500-1:2000,IHC 1:100-1:300,ICC/IF 1:50-1:200,ELISA 1:10000-1:20000
Molecular Weight	21kDa

Antigen Information

Gene Name	MRPL18
Alternative Names	MRPL18; HSPC071; 39S ribosomal protein L18; mitochondrial; L18mt; MRP-L18
Gene ID	29074.0
SwissProt ID	Q9H0U6
Immunogen	The antiserum was produced against synthesized peptide derived from human MRPL18. AA range:1-50

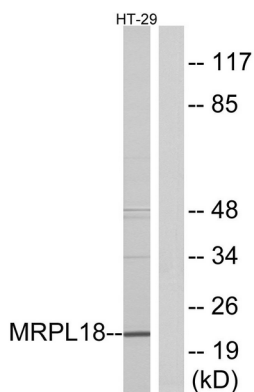
Background

This nuclear gene encodes a protein component of the larger 39S subunit of mitochondrial ribosome. This protein may also aid

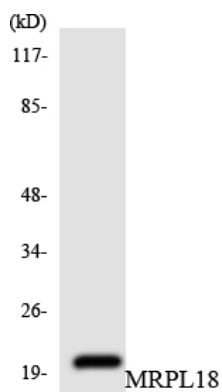
in the import of nuclear-encoded 5S rRNA into mitochondria. Alternative splicing results in multiple transcript variants, most of which are not predicted to encode a protein. A pseudogene of this gene is found on chromosome 16. [provided by RefSeq, Jan 2016],similarity:Belongs to the ribosomal protein L18P family.,

Research Area

Image Data



Western blot analysis of lysates from HT-29 cells, using MRPL18 Antibody. The lane on the right is blocked with the synthesized peptide.



Western blot analysis of the lysates from HUVEC cells using MRPL18 antibody.



Western Blot analysis of various cells using MRP-L18 Polyclonal Antibody diluted at 1: 1000