

Product Name: MRP-L17 Rabbit Polyclonal Antibody**Catalog #: APRab14115**

For research use only.

Summary

Description	Rabbit polyclonal Antibody
Host	Rabbit
Application	IHC, ICC/IF, ELISA
Reactivity	Human, Rat, Mouse
Conjugation	Unconjugated
Modification	Unmodified
Isotype	IgG
Clonality	Polyclonal
Form	Liquid
Concentration	1mg/ml
Storage	Aliquot and store at -20°C (valid for 12 months). Avoid freeze/thaw cycles.
Shipping	Ice bags
Buffer	Liquid in PBS containing 50% glycerol, 0.5% protective protein and 0.02% New type preservative N.
Purification	Affinity purification

Application

Dilution Ratio	IHC 1:100-1:300, ICC/IF 1:50-1:200, ELISA 1:10000-1:20000
Molecular Weight	20kDa

Antigen Information

Gene Name	MRPL17
Alternative Names	MRPL17; LIP2; 39S ribosomal protein L17; mitochondrial; L17mt; MRP-L17; LYST-interacting protein 2
Gene ID	63875.0
SwissProt ID	Q9NRX2
Immunogen	Synthesized peptide derived from MRP-L17 . at AA range: 100-180

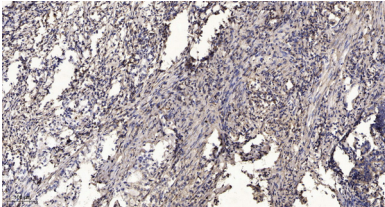
Background

Mammalian mitochondrial ribosomal proteins are encoded by nuclear genes and help in protein synthesis within the

mitochondrion. Mitochondrial ribosomes (mitoribosomes) consist of a small 28S subunit and a large 39S subunit. They have an estimated 75% protein to rRNA composition compared to prokaryotic ribosomes, where this ratio is reversed. Another difference between mammalian mitoribosomes and prokaryotic ribosomes is that the latter contain a 5S rRNA. Among different species, the proteins comprising the mitoribosome differ greatly in sequence, and sometimes in biochemical properties, which prevents easy recognition by sequence homology. This gene encodes a 39S subunit protein. [provided by RefSeq, Jul 2008],similarity:Belongs to the ribosomal protein L17P family.,tissue specificity:Detected in adrenal gland, mammary gland and adipose tissue.,

Research Area

Image Data



Immunohistochemical analysis of paraffin-embedded human Gastric adenocarcinoma. 1, Antibody was diluted at 1:200 (4° overnight) . 2, Tris-EDTA,pH9.0 was used for antigen retrieval. 3,Secondary antibody was diluted at 1:200 (room temperature, 45min) .