

**Product Name: MRP-L16 Rabbit Polyclonal Antibody****Catalog #: APRab14114**

For research use only.

**Summary**

<b>Description</b>	Rabbit polyclonal Antibody
<b>Host</b>	Rabbit
<b>Application</b>	WB,IHC,ICC/IF,ELISA
<b>Reactivity</b>	Human,Rat,Mouse
<b>Conjugation</b>	Unconjugated
<b>Modification</b>	Unmodified
<b>Isotype</b>	IgG
<b>Clonality</b>	Polyclonal
<b>Form</b>	Liquid
<b>Concentration</b>	1mg/ml
<b>Storage</b>	Aliquot and store at -20°C (valid for 12 months). Avoid freeze/thaw cycles.
<b>Shipping</b>	Ice bags
<b>Buffer</b>	Liquid in PBS containing 50% glycerol, 0.5% protective protein and 0.02% New type preservative N.
<b>Purification</b>	Affinity purification

**Application**

<b>Dilution Ratio</b>	WB 1:500-1:2000,IHC 1:100-1:300,ICC/IF 1:50-1:200,ELISA 1:20000-1:40000
<b>Molecular Weight</b>	28kDa

**Antigen Information**

<b>Gene Name</b>	MRPL16
<b>Alternative Names</b>	MRPL16; PNAS-111; 39S ribosomal protein L16; mitochondrial; L16mt; MRP-L16
<b>Gene ID</b>	54948.0
<b>SwissProt ID</b>	Q9NX20
<b>Immunogen</b>	The antiserum was produced against synthesized peptide derived from human MRPL16. AA range:171-220

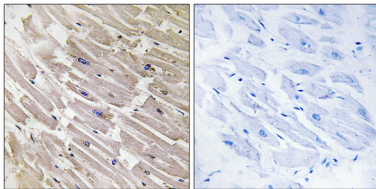
**Background**

Mammalian mitochondrial ribosomal proteins are encoded by nuclear genes and help in protein synthesis within the

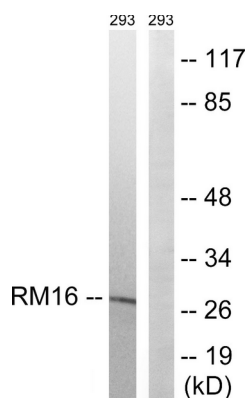
mitochondrion. Mitochondrial ribosomes (mitoribosomes) consist of a small 28S subunit and a large 39S subunit. They have an estimated 75% protein to rRNA composition compared to prokaryotic ribosomes, where this ratio is reversed. Another difference between mammalian mitoribosomes and prokaryotic ribosomes is that the latter contain a 5S rRNA. Among different species, the proteins comprising the mitoribosome differ greatly in sequence, and sometimes in biochemical properties, which prevents easy recognition by sequence homology. This gene encodes a 39S subunit protein. [provided by RefSeq, Jul 2008],function:Component of the large subunit of mitochondrial ribosome.,similarity:Belongs to the ribosomal protein L16P family.,

## Research Area

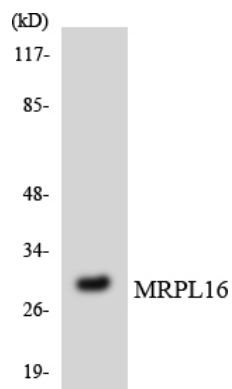
## Image Data



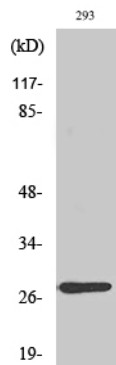
Immunohistochemistry analysis of paraffin-embedded human heart tissue, using MRPL16 Antibody. The picture on the right is blocked with the synthesized peptide.



Western blot analysis of lysates from 293 cells, using MRPL16 Antibody. The lane on the right is blocked with the synthesized peptide.



Western blot analysis of the lysates from HeLa cells using MRPL16 antibody.



Western Blot analysis of various cells using MRP-L16 Polyclonal Antibody diluted at 1: 2000