

**Product Name: MRP-L14 Rabbit Polyclonal Antibody****Catalog #: APRab14112**

For research use only.

**Summary**

<b>Description</b>	Rabbit polyclonal Antibody
<b>Host</b>	Rabbit
<b>Application</b>	WB,IHC,ICC/IF,ELISA
<b>Reactivity</b>	Human,Mouse,Rat
<b>Conjugation</b>	Unconjugated
<b>Modification</b>	Unmodified
<b>Isotype</b>	IgG
<b>Clonality</b>	Polyclonal
<b>Form</b>	Liquid
<b>Concentration</b>	1mg/ml
<b>Storage</b>	Aliquot and store at -20°C (valid for 12 months). Avoid freeze/thaw cycles.
<b>Shipping</b>	Ice bags
<b>Buffer</b>	Liquid in PBS containing 50% glycerol, 0.5% protective protein and 0.02% New type preservative N.
<b>Purification</b>	Affinity purification

**Application**

<b>Dilution Ratio</b>	WB 1:500-1:2000,IHC 1:100-1:300,ICC/IF 1:50-1:200,ELISA 1:10000-1:20000
<b>Molecular Weight</b>	16kDa

**Antigen Information**

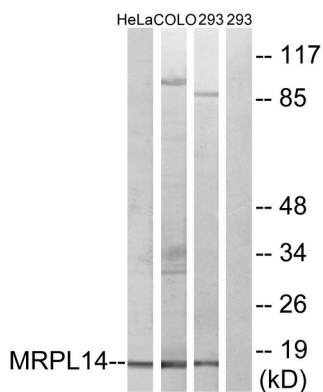
<b>Gene Name</b>	MRPL14
<b>Alternative Names</b>	MRPL14; MRPL32; RPML32; 39S ribosomal protein L14; mitochondrial; L14mt; MRP-L14; 39S ribosomal protein L32, mitochondrial; L32mt; MRP-L32
<b>Gene ID</b>	64928.0
<b>SwissProt ID</b>	Q6P1L8
<b>Immunogen</b>	The antiserum was produced against synthesized peptide derived from human MRPL14. AA range:96-145

**Background**

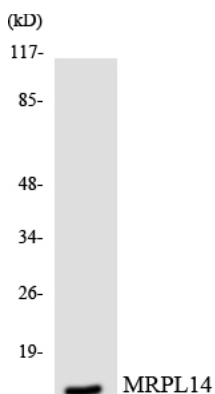
This nuclear gene encodes a protein component of the 39S subunit of the mitochondrial ribosome. A pseudogene of this gene is found on chromosome 17. [provided by RefSeq, Jan 2016],similarity:Belongs to the ribosomal protein L14P family.,

## Research Area

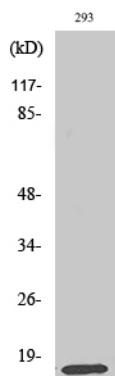
## Image Data



Western blot analysis of lysates from 293, HeLa, and COLO cells, using MRPL14 Antibody. The lane on the right is blocked with the synthesized peptide.



Western blot analysis of the lysates from HUVEC cells using MRPL14 antibody.



Western Blot analysis of various cells using MRP-L14 Polyclonal Antibody diluted at 1: 2000