

Product Name: MRP-L11 Rabbit Polyclonal Antibody**Catalog #: APRab14109**

For research use only.

Summary

Description	Rabbit polyclonal Antibody
Host	Rabbit
Application	WB,IHC,ICC/IF,ELISA
Reactivity	Human,Monkey
Conjugation	Unconjugated
Modification	Unmodified
Isotype	IgG
Clonality	Polyclonal
Form	Liquid
Concentration	1mg/ml
Storage	Aliquot and store at -20°C (valid for 12 months). Avoid freeze/thaw cycles.
Shipping	Ice bags
Buffer	Liquid in PBS containing 50% glycerol, 0.5% protective protein and 0.02% New type preservative N.
Purification	Affinity purification

Application

Dilution Ratio	WB 1:500-1:2000,IHC 1:100-1:300,ICC/IF 1:200-1:1000,ELISA 1:20000-1:40000
Molecular Weight	21kDa

Antigen Information

Gene Name	MRPL11
Alternative Names	MRPL11; CGI-113; 39S ribosomal protein L11; mitochondrial; L11mt; MRP-L11
Gene ID	65003.0
SwissProt ID	Q9Y3B7
Immunogen	The antiserum was produced against synthesized peptide derived from human MRPL11. AA range:21-70

Background

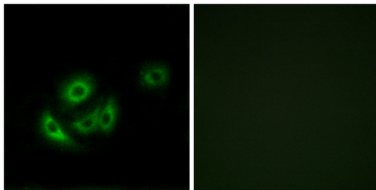
This nuclear gene encodes a 39S subunit component of the mitochondrial ribosome. Alternative splicing results in multiple

transcript variants. Pseudogenes for this gene are found on chromosomes 5 and 12. [provided by RefSeq, May 2014],similarity:Belongs to the ribosomal protein L11P family.,

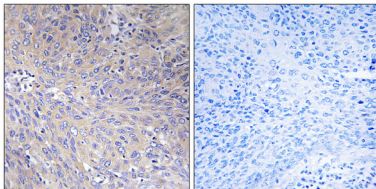
Research Area

Cell Biology

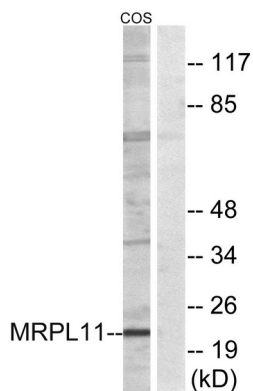
Image Data



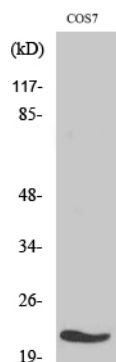
Immunofluorescence analysis of A549 cells, using MRPL11 Antibody. The picture on the right is blocked with the synthesized peptide.



Immunohistochemistry analysis of paraffin-embedded human cervix carcinoma tissue, using MRPL11 Antibody. The picture on the right is blocked with the synthesized peptide.



Western blot analysis of lysates from COS cells, using MRPL11 Antibody. The lane on the right is blocked with the synthesized peptide.



Western Blot analysis of various cells using MRP-L11 Polyclonal Antibody diluted at 1: 500