

---

**Product Name: MRP7 Rabbit Polyclonal Antibody****Catalog #: APRab14106**

For research use only.

**Summary**

<b>Description</b>	Rabbit polyclonal Antibody
<b>Host</b>	Rabbit
<b>Application</b>	WB,IHC
<b>Reactivity</b>	Human,Monkey
<b>Conjugation</b>	Unconjugated
<b>Modification</b>	Unmodified
<b>Isotype</b>	IgG
<b>Clonality</b>	Polyclonal
<b>Form</b>	Liquid
<b>Concentration</b>	1mg/ml
<b>Storage</b>	Aliquot and store at -20°C (valid for 12 months). Avoid freeze/thaw cycles.
<b>Shipping</b>	Ice bags
<b>Buffer</b>	Liquid in PBS containing 50% glycerol, 0.5% protective protein and 0.02% New type preservative N.
<b>Purification</b>	Affinity purification

**Application**

<b>Dilution Ratio</b>	WB 1:500-1:2000,IHC 1:50-1:300
<b>Molecular Weight</b>	162kDa

**Antigen Information**

<b>Gene Name</b>	ABCC10
<b>Alternative Names</b>	ABCC10; MRP7; SIMRP7; Multidrug resistance-associated protein 7; ATP-binding cassette sub-family C member 10
<b>Gene ID</b>	89845.0
<b>SwissProt ID</b>	Q5T3U5
<b>Immunogen</b>	The antiserum was produced against synthesized peptide derived from human MRP7. AA range:835-884

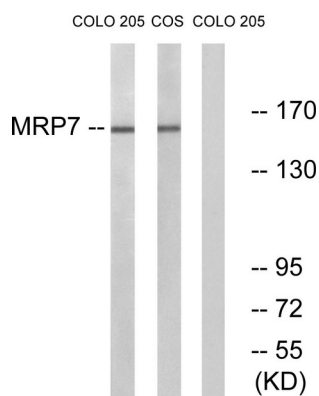
**Background**

The protein encoded by this gene is a member of the superfamily of ATP-binding cassette (ABC) transporters. ABC proteins transport various molecules across extra- and intra-cellular membranes. ABC genes are divided into seven distinct subfamilies (ABC1, MDR/TAP, MRP, ALD, OABP, GCN20, and White). This ABC full-transporter is a member of the MRP subfamily which is involved in multi-drug resistance. Multiple transcript variants encoding different isoforms have been found for this gene. [provided by RefSeq, Nov 2010],function:ATP-dependent transporter probably involved in cellular detoxification through lipophilic anion extrusion.,similarity:Belongs to the ABC transporter family.,similarity:Belongs to the ABC transporter family. Conjugate transporter (TC 3.A.1.208) subfamily.,similarity:Contains 2 ABC transmembrane type-1 domains.,similarity:Contains 2 ABC transporter domains.,tissue specificity:Isoform 1 is specifically expressed in spleen. Isoform 2 is more widely expressed.,

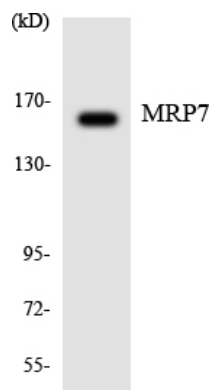
## Research Area

ABC transporters;

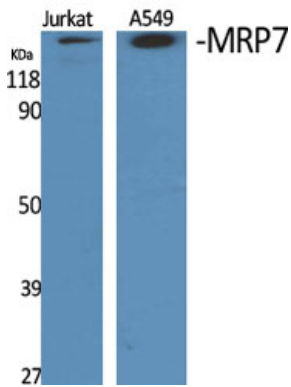
## Image Data



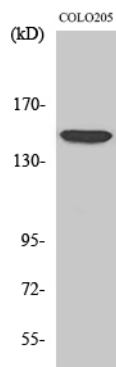
Western blot analysis of lysates from COLO and COS7 cells, using MRP7 Antibody. The lane on the right is blocked with the synthesized peptide.



Western blot analysis of the lysates from HepG2 cells using MRP7 antibody.



Western Blot analysis of various cells using MRP7 Polyclonal Antibody diluted at 1: 1000



Western Blot analysis of COS7 cells using MRP7 Polyclonal Antibody diluted at 1: 1000