
Product Name: MRGX4 Rabbit Polyclonal Antibody**Catalog #: APRab14093**

For research use only.

Summary

Description	Rabbit polyclonal Antibody
Host	Rabbit
Application	WB,IHC
Reactivity	Human,Rat,Mouse
Conjugation	Unconjugated
Modification	Unmodified
Isotype	IgG
Clonality	Polyclonal
Form	Liquid
Concentration	1mg/ml
Storage	Aliquot and store at -20°C (valid for 12 months). Avoid freeze/thaw cycles.
Shipping	Ice bags
Buffer	Liquid in PBS containing 50% glycerol, 0.5% protective protein and 0.02% New type preservative N.
Purification	Affinity purification

Application

Dilution Ratio	WB 1:500-1:2000,IHC 1:50-1:300
Molecular Weight	33kDa

Antigen Information

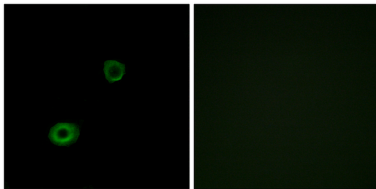
Gene Name	MRGPRX4
Alternative Names	MRGPRX4; MRGX4; SNSR5; SNSR6; Mas-related G-protein coupled receptor member X4; Sensory neuron-specific G-protein coupled receptor 5/6
Gene ID	117196.0
SwissProt ID	Q96LA9
Immunogen	The antiserum was produced against synthesized peptide derived from human MRGX4. AA range:271-320

Background

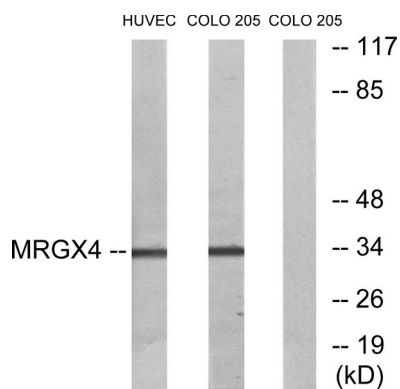
function:Orphan receptor. Probably involved in the function of nociceptive neurons. May regulate nociceptor function and/or development, including the sensation or modulation of pain. Potently activated by enkephalins.,similarity:Belongs to the G-protein coupled receptor 1 family. Mas subfamily.,tissue specificity:Uniquely localized in a subset of small dorsal root and trigeminal sensory neurons.,function:Orphan receptor. Probably involved in the function of nociceptive neurons. May regulate nociceptor function and/or development, including the sensation or modulation of pain. Potently activated by enkephalins.,similarity:Belongs to the G-protein coupled receptor 1 family. Mas subfamily.,tissue specificity:Uniquely localized in a subset of small dorsal root and trigeminal sensory neurons.,

Research Area

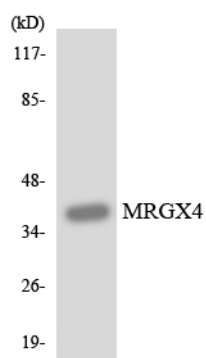
Image Data



Immunofluorescence analysis of A549 cells, using MRGX4 Antibody. The picture on the right is blocked with the synthesized peptide.



Western blot analysis of lysates from HUVEC and COLO cells, using MRGX4 Antibody. The lane on the right is blocked with the synthesized peptide.



Western blot analysis of the lysates from HUVEC cells using MRGX4 antibody.

Western Blot analysis of HUVEC cells using MRGX4 Polyclonal Antibody

