
Product Name: MRGX3 Rabbit Polyclonal Antibody**Catalog #: APRab14092**

For research use only.

Summary

Description	Rabbit polyclonal Antibody
Host	Rabbit
Application	WB,IHC,ELISA
Reactivity	Human,Rat,Mouse
Conjugation	Unconjugated
Modification	Unmodified
Isotype	IgG
Clonality	Polyclonal
Form	Liquid
Concentration	1mg/ml
Storage	Aliquot and store at -20°C (valid for 12 months). Avoid freeze/thaw cycles.
Shipping	Ice bags
Buffer	Liquid in PBS containing 50% glycerol, 0.5% protective protein and 0.02% New type preservative N.
Purification	Affinity purification

Application

Dilution Ratio	WB 1:500-1:2000,IHC 1:50-1:300,ELISA 1:2000-1:20000
Molecular Weight	34kDa

Antigen Information

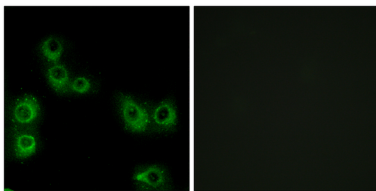
Gene Name	MRGPRX3
Alternative Names	MRGPRX3; MRGX3; SNSR1; SNSR2; Mas-related G-protein coupled receptor member X3; Sensory neuron-specific G-protein coupled receptor 1/2
Gene ID	117195.0
SwissProt ID	Q96LB0
Immunogen	The antiserum was produced against synthesized peptide derived from human MRGX3. AA range:99-148

Background

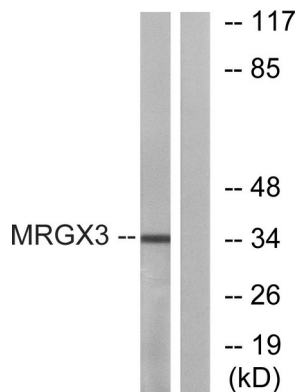
This gene encodes a member of the mas-related/sensory neuron specific subfamily of G protein coupled receptors. The encoded protein may be involved in sensory neuron regulation and in the modulation of pain. [provided by RefSeq, Oct 2009],function:Orphan receptor. Probably involved in the function of nociceptive neurons. May regulate nociceptor function and/or development, including the sensation or modulation of pain. Potently activated by enkephalins.,similarity:Belongs to the G-protein coupled receptor 1 family. Mas subfamily.,tissue specificity:Uniquely localized in a subset of small dorsal root and trigeminal sensory neurons.,

Research Area

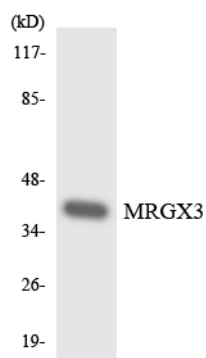
Image Data



Immunofluorescence analysis of MCF7 cells, using MRGX3 Antibody. The picture on the right is blocked with the synthesized peptide.



Western blot analysis of lysates from K562 cells, using MRGX3 Antibody. The lane on the right is blocked with the synthesized peptide.



Western blot analysis of the lysates from 293 cells using MRGX3 antibody.

Western Blot analysis of K562 cells using MRGX3 Polyclonal Antibody

