
Product Name: MRGX1 Rabbit Polyclonal Antibody**Catalog #: APRab14090**

For research use only.

Summary

Description	Rabbit polyclonal Antibody
Host	Rabbit
Application	WB,IHC
Reactivity	Human,Rat,Mouse
Conjugation	Unconjugated
Modification	Unmodified
Isotype	IgG
Clonality	Polyclonal
Form	Liquid
Concentration	1mg/ml
Storage	Aliquot and store at -20°C (valid for 12 months). Avoid freeze/thaw cycles.
Shipping	Ice bags
Buffer	Liquid in PBS containing 50% glycerol, 0.5% protective protein and 0.02% New type preservative N.
Purification	Affinity purification

Application

Dilution Ratio	WB 1:500-1:2000,IHC 1:50-1:300
Molecular Weight	36kDa

Antigen Information

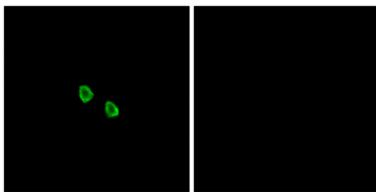
Gene Name	MRGPRX1
Alternative Names	MRGPRX1; MRGX1; SNSR3; SNSR4; Mas-related G-protein coupled receptor member X1; Sensory neuron-specific G-protein coupled receptor 3/4
Gene ID	259249.0
SwissProt ID	Q96LB2
Immunogen	The antiserum was produced against synthesized peptide derived from human MRGX1. AA range:271-320

Background

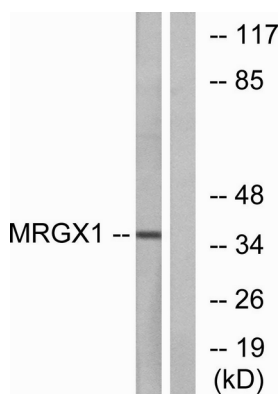
function:Orphan receptor. Probably involved in the function of nociceptive neurons. May regulate nociceptor function and/or development, including the sensation or modulation of pain. Potently activated by enkephalins including BAM22 (bovine adrenal medulla peptide 22) and BAM (8-22). BAM22 is the most potent compound and evoked a large and dose-dependent release of intracellular calcium in stably transfected cells. G(alpha)q proteins are involved in the calcium-signaling pathway.,similarity:Belongs to the G-protein coupled receptor 1 family. Mas subfamily.,tissue specificity:Uniquely localized in a subset of small dorsal root and trigeminal sensory neurons.,function:Orphan receptor. Probably involved in the function of nociceptive neurons. May regulate nociceptor function and/or development, including the sensation or modulation of pain. Potently activated by enkephalins including BAM22 (bovine adrenal medulla peptide 22) and BAM (8-22). BAM22 is the most potent compound and evoked a large and dose-dependent release of intracellular calcium in stably transfected cells. G(alpha)q proteins are involved in the calcium-signaling pathway.,similarity:Belongs to the G-protein coupled receptor 1 family. Mas subfamily.,tissue specificity:Uniquely localized in a subset of small dorsal root and trigeminal sensory neurons.,

Research Area

Image Data



Immunofluorescence analysis of HepG2 cells, using MRGX1 Antibody. The picture on the right is blocked with the synthesized peptide.



Western blot analysis of lysates from MCF-7 cells, using MRGX1 Antibody. The lane on the right is blocked with the synthesized peptide.