

Product Name: MP68 Rabbit Polyclonal Antibody**Catalog #: APRab14052**

For research use only.

Summary

Description	Rabbit polyclonal Antibody
Host	Rabbit
Application	IHC, ICC/IF, ELISA
Reactivity	Human, Mouse
Conjugation	Unconjugated
Modification	Unmodified
Isotype	IgG
Clonality	Polyclonal
Form	Liquid
Concentration	1mg/ml
Storage	Aliquot and store at -20°C (valid for 12 months). Avoid freeze/thaw cycles.
Shipping	Ice bags
Buffer	Liquid in PBS containing 50% glycerol, 0.5% protective protein and 0.02% New type preservative N.
Purification	Affinity purification

Application

Dilution Ratio IHC 1:100-1:300, ICC/IF 1:50-1:200, ELISA 1:10000-1:20000

Molecular Weight

Antigen Information

Gene Name	MP68
Alternative Names	MP68; C14orf2; 6.8 kDa mitochondrial proteolipid
Gene ID	9556.0
SwissProt ID	P56378
Immunogen	The antiserum was produced against synthesized peptide derived from human MP68. AA range: 9-58

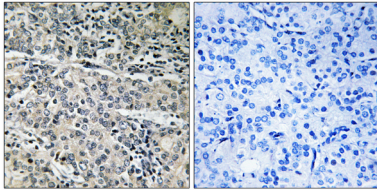
Background

similarity: Belongs to the small mitochondrial proteolipid family, similarity: Belongs to the small mitochondrial proteolipid

family.,

Research Area

Image Data



Immunohistochemistry analysis of paraffin-embedded human prostate carcinoma tissue, using MP68 Antibody. The picture on the right is blocked with the synthesized peptide.