

**Product Name: MOX-2 Rabbit Polyclonal Antibody****Catalog #: APRab14051**

For research use only.

**Summary**

<b>Description</b>	Rabbit polyclonal Antibody
<b>Host</b>	Rabbit
<b>Application</b>	WB,IHC,ICC/IF,ELISA
<b>Reactivity</b>	Human,Mouse,Rat
<b>Conjugation</b>	Unconjugated
<b>Modification</b>	Unmodified
<b>Isotype</b>	IgG
<b>Clonality</b>	Polyclonal
<b>Form</b>	Liquid
<b>Concentration</b>	1mg/ml
<b>Storage</b>	Aliquot and store at -20°C (valid for 12 months). Avoid freeze/thaw cycles.
<b>Shipping</b>	Ice bags
<b>Buffer</b>	Liquid in PBS containing 50% glycerol, 0.5% protective protein and 0.02% New type preservative N.
<b>Purification</b>	Affinity purification

**Application**

<b>Dilution Ratio</b>	WB 1:500-1:2000,IHC 1:100-1:300,ICC/IF 1:50-1:200,ELISA 1:5000-1:20000
<b>Molecular Weight</b>	33kDa

**Antigen Information**

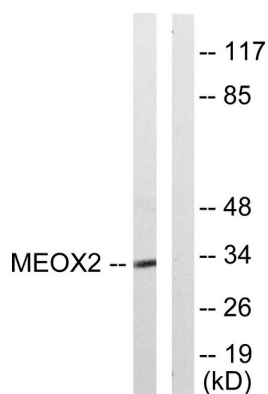
<b>Gene Name</b>	MEOX2
<b>Alternative Names</b>	MEOX2; GAX; MOX2; Homeobox protein MOX-2; Growth arrest-specific homeobox; Mesenchyme homeobox 2
<b>Gene ID</b>	4223.0
<b>SwissProt ID</b>	P50222
<b>Immunogen</b>	The antiserum was produced against synthesized peptide derived from human MEOX2. AA range:151-200

**Background**

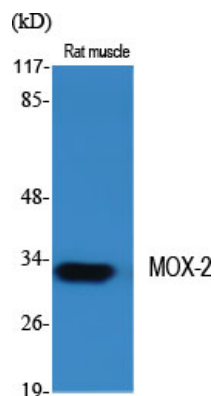
This gene encodes a member of a subfamily of non-clustered, diverged, antennapedia-like homeobox-containing genes. The encoded protein may play a role in the regulation of vertebrate limb myogenesis. Mutations in the related mouse protein may be associated with craniofacial and/or skeletal abnormalities, in addition to neurovascular dysfunction observed in Alzheimer's disease. [provided by RefSeq, Jul 2008],function:Role in mesoderm induction and its earliest regional specification, somitogenesis, and myogenic and sclerotomal differentiation. May have a regulatory role when quiescent vascular smooth muscle cells reenter the cell cycle.,polymorphism:The poly-His region of MEOX2 is polymorphic and the number of His varies in the population.,similarity:Contains 1 homeobox DNA-binding domain.,subunit:Interacts with RNF10.,tissue specificity:Embryo and placenta,

## Research Area

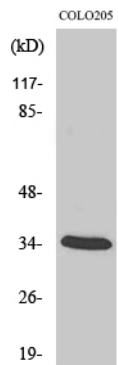
## Image Data



Western blot analysis of lysates from COLO205 cells, using MEOX2 Antibody. The lane on the right is blocked with the synthesized peptide.



Western Blot analysis of various cells using MOX-2 Polyclonal Antibody diluted at 1 : 2000



Western Blot analysis of COLO205 cells using MOX-2 Polyclonal Antibody diluted at 1: 2000