
Product Name: Mox1 Rabbit Polyclonal Antibody**Catalog #: APRab14050**

For research use only.

Summary

Description	Rabbit polyclonal Antibody
Host	Rabbit
Application	WB,IHC,ICC/IF,ELISA
Reactivity	Human,Mouse,Rat
Conjugation	Unconjugated
Modification	Unmodified
Isotype	IgG
Clonality	Polyclonal
Form	Liquid
Concentration	1mg/ml
Storage	Aliquot and store at -20°C (valid for 12 months). Avoid freeze/thaw cycles.
Shipping	Ice bags
Buffer	Liquid in PBS containing 50% glycerol, 0.5% protective protein and 0.02% New type preservative N.
Purification	Affinity purification

Application

Dilution Ratio	WB 1:500-1:2000,IHC 1:50-1:200,ICC/IF 1:50-1:200,ELISA 1:10000-1:20000
Molecular Weight	65kDa

Antigen Information

Gene Name	NOX1 MOX1 NOH1
Alternative Names	NADPH oxidase 1 (NOX-1;EC 1.-.-.;Mitogenic oxidase 1;MOX-1;NADH/NADPH mitogenic oxidase subunit P65-MOX;NOH-1)
Gene ID	27035.0
SwissProt ID	Q9Y5S8
Immunogen	Synthetic peptide from human protein at AA range: 210-260

Background

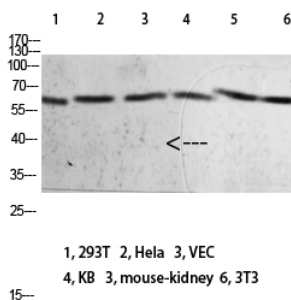
This gene encodes a member of the NADPH oxidase family of enzymes responsible for the catalytic one-electron transfer of

oxygen to generate superoxide or hydrogen peroxide. Alternatively spliced transcript variants encoding multiple isoforms have been observed for this gene. [provided by RefSeq, Nov 2012],cofactor:FAD ,cofactor:NADP ,enzyme regulation:The oxidase activity is potentiated by NOXA1 and NOXO1.,function:NOH-1S is a voltage-gated proton channel that mediates the H(+) currents of resting phagocytes and other tissues. It participates in the regulation of cellular pH and is blocked by zinc. NOH-1L is a pyridine nucleotide-dependent oxidoreductase that generates superoxide and might conduct H(+) ions as part of its electron transport mechanism, whereas NOH-1S does not contain an electron transport chain.,similarity:Contains 1 FAD-binding FR-type domain.,similarity:Contains 1 ferric oxidoreductase domain.,subunit:NOX1, NOXA1, NOXO1, RAC1 and CYBA forms a functional multimeric complex supporting ROS production. Interacts with NOXA1 and NOXO1.,tissue specificity:NOH-1L is detected in colon, uterus, prostate, and colon carcinoma, but not in peripheral blood leukocytes. NOH-1S is detected only in colon and colon carcinoma cells.,

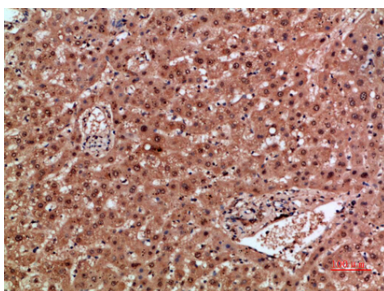
Research Area

Leukocyte transendothelial migration;

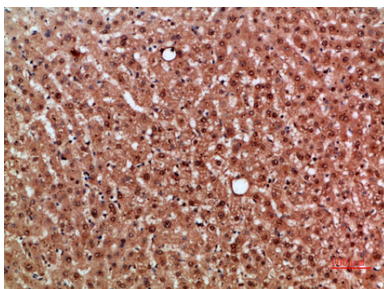
Image Data



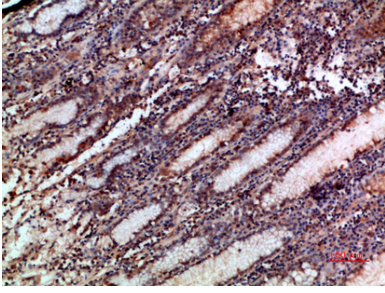
Western blot analysis of 293T HeLa VEC KB mouse-kidney 3T3 lysate, antibody was diluted at 2000. Secondary antibody was diluted at 1:20000



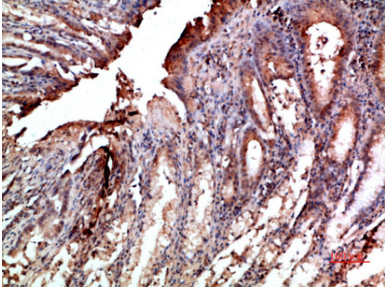
Immunohistochemical analysis of paraffin-embedded human-liver, antibody was diluted at 1:200



Immunohistochemical analysis of paraffin-embedded human-liver, antibody was diluted at 1:200



Immunohistochemical analysis of paraffin-embedded human-stomach, antibody was diluted at 1:200



Immunohistochemical analysis of paraffin-embedded human-stomach, antibody was diluted at 1:200