
Product Name: MOT7 Rabbit Polyclonal Antibody**Catalog #: APRab14042**

For research use only.

Summary

Description	Rabbit polyclonal Antibody
Host	Rabbit
Application	WB,ELISA
Reactivity	Human,Mouse
Conjugation	Unconjugated
Modification	Unmodified
Isotype	IgG
Clonality	Polyclonal
Form	Liquid
Concentration	1mg/ml
Storage	Aliquot and store at -20°C (valid for 12 months). Avoid freeze/thaw cycles.
Shipping	Ice bags
Buffer	Liquid in PBS containing 50% glycerol, and 0.02% New type preservative N.
Purification	Affinity purification

Application

Dilution Ratio	WB 1:500-1:2000,ELISA 1:5000-1:20000
Molecular Weight	57kDa

Antigen Information

Gene Name	SLC16A6 MCT6 MCT7
Alternative Names	
Gene ID	9120.0
SwissProt ID	O15403
Immunogen	Synthesized peptide derived from human protein . at AA range: 280-360

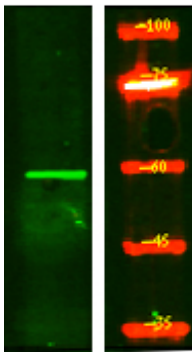
Background

function:Proton-linked monocarboxylate transporter. Catalyzes the rapid transport across the plasma membrane of many monocarboxylates such as lactate, pyruvate, branched-chain oxo acids derived from leucine, valine and isoleucine, and the ketone bodies acetoacetate, beta-hydroxybutyrate and acetate.,similarity:Belongs to the major facilitator superfamily.

Monocarboxylate porter (TC 2.A.1.13) family.,function:Proton-linked monocarboxylate transporter. Catalyzes the rapid transport across the plasma membrane of many monocarboxylates such as lactate, pyruvate, branched-chain oxo acids derived from leucine, valine and isoleucine, and the ketone bodies acetoacetate, beta-hydroxybutyrate and acetate.,similarity:Belongs to the major facilitator superfamily. Monocarboxylate porter (TC 2.A.1.13) family.,

Research Area

Image Data



Western Blot analysis of HEK293 lysis, using primary antibody at 1:1000 dilution. Secondary antibody was diluted at 1:10000