

Product Name: MOT6 Rabbit Polyclonal Antibody**Catalog #: APRab14041**

For research use only.

Summary

Description	Rabbit polyclonal Antibody
Host	Rabbit
Application	WB,ELISA
Reactivity	Human,Mouse
Conjugation	Unconjugated
Modification	Unmodified
Isotype	IgG
Clonality	Polyclonal
Form	Liquid
Concentration	1mg/ml
Storage	Aliquot and store at -20°C (valid for 12 months). Avoid freeze/thaw cycles.
Shipping	Ice bags
Buffer	Liquid in PBS containing 50% glycerol, and 0.02% New type preservative N.
Purification	Affinity purification

Application

Dilution Ratio	WB 1:500-1:2000,ELISA 1:5000-1:20000
Molecular Weight	55kDa

Antigen Information

Gene Name	SLC16A5 MCT5 MCT6
Alternative Names	
Gene ID	9121.0
SwissProt ID	O15375
Immunogen	Synthesized peptide derived from human protein . at AA range: 220-300

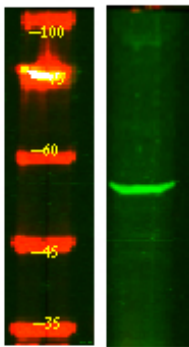
Background

This gene encodes a member of the monocarboxylate transporter family and the major facilitator superfamily. The encoded protein is localized to the cell membrane and acts as a proton-linked transporter of bumetanide. Transport by the encoded protein is inhibited by four loop diuretics, nateglinide, thiazides, probenecid, and glibenclamide. Alternative splicing results in

multiple transcript variants. [provided by RefSeq, Nov 2012],function:Proton-linked monocarboxylate transporter. Catalyzes the rapid transport across the plasma membrane of many monocarboxylates such as lactate, pyruvate, branched-chain oxo acids derived from leucine, valine and isoleucine, and the ketone bodies acetoacetate, beta-hydroxybutyrate and acetate.,similarity:Belongs to the major facilitator superfamily. Monocarboxylate porter (TC 2.A.1.13) family.,tissue specificity:Highly expressed in kidney.,

Research Area

Image Data



Western Blot analysis of HEK293 lysis, using primary antibody at 1:1000 dilution. Secondary antibody was diluted at 1:10000