
Product Name: MOR-1 Rabbit Polyclonal Antibody**Catalog #: APRab14030**

For research use only.

Summary

Description	Rabbit polyclonal Antibody
Host	Rabbit
Application	WB,IHC,ICC/IF,ELISA
Reactivity	Human,Mouse,Rat
Conjugation	Unconjugated
Modification	Unmodified
Isotype	IgG
Clonality	Polyclonal
Form	Liquid
Concentration	1mg/ml
Storage	Aliquot and store at -20°C (valid for 12 months). Avoid freeze/thaw cycles.
Shipping	Ice bags
Buffer	Liquid in PBS containing 50% glycerol, 0.5% protective protein and 0.02% New type preservative N.
Purification	Affinity purification

Application

Dilution Ratio	WB 1:500-1:2000,IHC 1:100-1:300,ICC/IF 1:50-1:200,ELISA 1:10000-1:20000
Molecular Weight	60kDa

Antigen Information

Gene Name	OPRM1
Alternative Names	OPRM1; MOR1; Mu-type opioid receptor; M-OR-1; MOR-1; Mu opiate receptor; Mu opioid receptor; MOP; hMOP
Gene ID	4988.0
SwissProt ID	P35372
Immunogen	The antiserum was produced against synthesized peptide derived from human Opioid Receptor. AA range:341-390

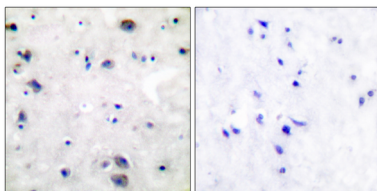
Background

This gene encodes one of at least three opioid receptors in humans; the mu opioid receptor (MOR). The MOR is the principal target of endogenous opioid peptides and opioid analgesic agents such as beta-endorphin and enkephalins. The MOR also has an important role in dependence to other drugs of abuse, such as nicotine, cocaine, and alcohol via its modulation of the dopamine system. The NM_001008503.2:c.118A>G allele has been associated with opioid and alcohol addiction and variations in pain sensitivity but evidence for it having a causal role is conflicting. Multiple transcript variants encoding different isoforms have been found for this gene. Though the canonical MOR belongs to the superfamily of 7-transmembrane-spanning G-protein-coupled receptors some isoforms of this gene have only 6 transmembrane domains. [provided by RefSeq, Oct 2013],function:Inhibits neurotransmitter release by reducing calcium ion currents and increasing potassium ion conductance. Receptor for beta-endorphin.,online information:Mu opioid receptor entry,polymorphism:Variant Asp-40 does not show altered binding affinities for most opioid peptides and alkaloids tested, but it binds beta-endorphin, an endogenous opioid that activates the mu opioid receptor, approximately 3 times more tightly than the most common allelic form.,similarity:Belongs to the G-protein coupled receptor 1 family.,subunit:Forms a complex with G(alpha)z/i2 subunits and the RGSZ proteins, RGSZ17 and RGSZ20. The formation of this complex results in mu-opioid receptor desensitization. Interacts with RGSZ17 and RGSZ20.,

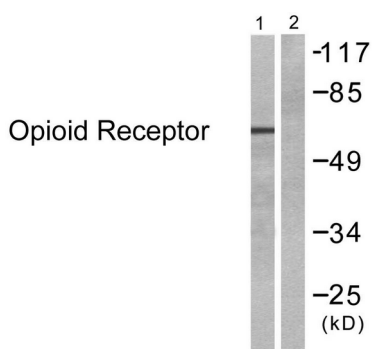
Research Area

Neuroactive ligand-receptor interaction;

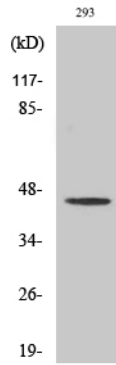
Image Data



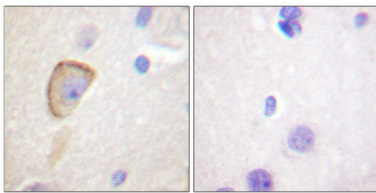
Immunohistochemistry analysis of paraffin-embedded human brain tissue, using Opioid Receptor Antibody. The picture on the right is blocked with the synthesized peptide.



Western blot analysis of lysates from 293 cells, treated with EGF 200ng/ml 30', using Opioid Receptor Antibody. The lane on the right is blocked with the synthesized peptide.



Western Blot analysis of various cells using MOR-1 Polyclonal Antibody diluted at 1 : 2000



Immunohistochemical analysis of paraffin-embedded Human brain. Antibody was diluted at 1:100 (4°, overnight) . High-pressure and temperature Tris-EDTA, pH 8.0 was used for antigen retrieval. Negative control (right) obtained from antibody was pre-absorbed by immunogen peptide.