

Product Name: MOF Rabbit Polyclonal Antibody**Catalog #: APRab14023**

For research use only.

Summary

Description	Rabbit polyclonal Antibody
Host	Rabbit
Application	IHC, ICC/IF, ELISA
Reactivity	Human, Mouse, Rat
Conjugation	Unconjugated
Modification	Unmodified
Isotype	IgG
Clonality	Polyclonal
Form	Liquid
Concentration	1mg/ml
Storage	Aliquot and store at -20°C (valid for 12 months). Avoid freeze/thaw cycles.
Shipping	Ice bags
Buffer	Liquid in PBS containing 50% glycerol, 0.5% protective protein and 0.02% New type preservative N.
Purification	Affinity purification

Application

Dilution Ratio IHC 1:100-1:300, ICC/IF 1:50-1:200, ELISA 1:5000-1:20000

Molecular Weight

Antigen Information

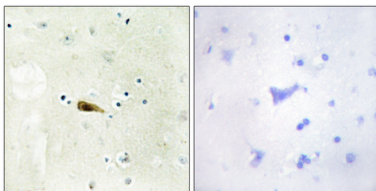
Gene Name	KAT8
Alternative Names	KAT8; MOF; MYST1; PP7073; Histone acetyltransferase KAT8; Lysine acetyltransferase 8; MOZ; YBF2/SAS3, SAS2 and TIP60 protein 1; MYST-1; hMOF
Gene ID	84148.0
SwissProt ID	Q9H7Z6
Immunogen	The antiserum was produced against synthesized peptide derived from human MYST1. AA range:101-150

Background

This gene encodes a member of the MYST histone acetylase protein family. The encoded protein has a characteristic MYST domain containing an acetyl-CoA-binding site, a chromodomain typical of proteins which bind histones, and a C2HC-type zinc finger. Multiple transcript variants encoding different isoforms have been found for this gene. [provided by RefSeq, Feb 2012],catalytic activity:Acetyl-CoA + histone = CoA + acetylhistone.,function:Histone acetyltransferase which may be involved in transcriptional activation. May influence the function of ATM.,similarity:Belongs to the MYST (SAS/MOZ) family.,similarity:Contains 1 C2HC-type zinc finger.,similarity:Contains 1 chromo domain.,subunit:Component of a multisubunit histone acetyltransferase complex (MSL) at least composed of the MOF/MYST1, MSL1/hampin, MSL2L1 and MSL3L1. Interacts with the chromodomain of MORF4L1/MRG15. Interacts with ATM through the chromodomain.,

Research Area

Image Data



Immunohistochemistry analysis of paraffin-embedded human brain tissue, using MYST1 Antibody. The picture on the right is blocked with the synthesized peptide.