

---

**Product Name: Mob3A/B Rabbit Polyclonal Antibody****Catalog #: APRab14015**

For research use only.

**Summary**

<b>Description</b>	Rabbit polyclonal Antibody
<b>Host</b>	Rabbit
<b>Application</b>	WB,IHC,ICC/IF,ELISA
<b>Reactivity</b>	Human,Mouse
<b>Conjugation</b>	Unconjugated
<b>Modification</b>	Unmodified
<b>Isotype</b>	IgG
<b>Clonality</b>	Polyclonal
<b>Form</b>	Liquid
<b>Concentration</b>	1mg/ml
<b>Storage</b>	Aliquot and store at -20°C (valid for 12 months). Avoid freeze/thaw cycles.
<b>Shipping</b>	Ice bags
<b>Buffer</b>	Liquid in PBS containing 50% glycerol, 0.5% protective protein and 0.02% New type preservative N.
<b>Purification</b>	Affinity purification

**Application**

<b>Dilution Ratio</b>	WB 1:500-1:2000,IHC 1:100-1:300,ICC/IF 1:50-1:200,ELISA 1:5000-1:20000
<b>Molecular Weight</b>	25kDa

**Antigen Information**

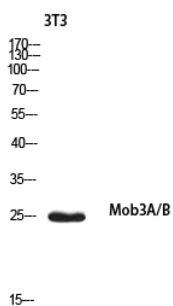
<b>Gene Name</b>	MMOBKL2A/MMOBKL2B MOB3A; MOBKL2A; MOB kinase activator 3A; MOB-LAK; Mob1 homolog 2A; Mps one binder
<b>Alternative Names</b>	kinase activator-like 2A; MOB3B; MOBKL2B; MOB kinase activator 3B; Mob1 homolog 2b; Mps one binder kinase activator-like 2B
<b>Gene ID</b>	126308.0
<b>SwissProt ID</b>	Q96BX8
<b>Immunogen</b>	Synthesized peptide derived from Mob3A/B . at AA range: 1-80

**Background**

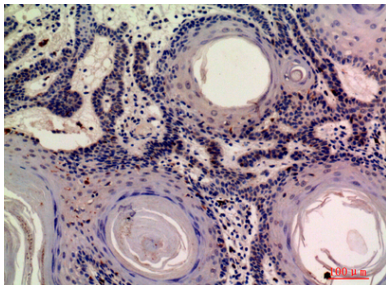
function:May regulate the activity of kinases.,sequence caution:Chimera. There is an inclusion of DNA from another gene in position 141.,similarity:Belongs to the MOB1/phocein family.,function:May regulate the activity of kinases.,sequence caution:Chimera. There is an inclusion of DNA from another gene in position 141.,similarity:Belongs to the MOB1/phocein family.,

## Research Area

## Image Data



Western blot analysis of 3T3 using Mob3A/B antibody.. Secondary antibody was diluted at 1:20000



Immunohistochemical analysis of paraffin-embedded human-skin, antibody was diluted at 1:200