

**Product Name: MMP-11 Rabbit Polyclonal Antibody****Catalog #: APRab13975**

For research use only.

**Summary**

<b>Description</b>	Rabbit polyclonal Antibody
<b>Host</b>	Rabbit
<b>Application</b>	WB,IHC,ICC/IF,ELISA
<b>Reactivity</b>	Human,Mouse,Rat
<b>Conjugation</b>	Unconjugated
<b>Modification</b>	Unmodified
<b>Isotype</b>	IgG
<b>Clonality</b>	Polyclonal
<b>Form</b>	Liquid
<b>Concentration</b>	1mg/ml
<b>Storage</b>	Aliquot and store at -20°C (valid for 12 months). Avoid freeze/thaw cycles.
<b>Shipping</b>	Ice bags
<b>Buffer</b>	Liquid in PBS containing 50% glycerol, 0.5% protective protein and 0.02% New type preservative N.
<b>Purification</b>	Affinity purification

**Application**

<b>Dilution Ratio</b>	WB 1:500-1:2000,IHC 1:100-1:300,ICC/IF 1:200-1:1000,ELISA 1:10000-1:20000
<b>Molecular Weight</b>	60kDa

**Antigen Information**

<b>Gene Name</b>	MMP11
<b>Alternative Names</b>	MMP11; STMY3; Stromelysin-3; SL-3; ST3; Matrix metalloproteinase-11; MMP-11
<b>Gene ID</b>	4320.0
<b>SwissProt ID</b>	P24347
<b>Immunogen</b>	The antiserum was produced against synthesized peptide derived from human MMP-11. AA range:61-110

**Background**

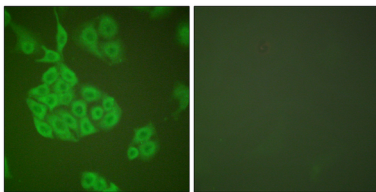
Proteins of the matrix metalloproteinase (MMP) family are involved in the breakdown of extracellular matrix in normal

physiological processes, such as embryonic development, reproduction, and tissue remodeling, as well as in disease processes, such as arthritis and metastasis. Most MMP's are secreted as inactive proproteins which are activated when cleaved by extracellular proteinases. However, the enzyme encoded by this gene is activated intracellularly by furin within the constitutive secretory pathway. Also in contrast to other MMP's, this enzyme cleaves alpha 1-proteinase inhibitor but weakly degrades structural proteins of the extracellular matrix. [provided by RefSeq, Jul 2008],cofactor: Binds 1 calcium ion per subunit.,cofactor: Binds 2 zinc ions per subunit.,domain: The conserved cysteine present in the cysteine-switch motif binds the catalytic zinc ion, thus inhibiting the enzyme. The dissociation of the cysteine from the zinc ion upon the activation-peptide release activates the enzyme.,function: May play an important role in the progression of epithelial malignancies.,PTM: The precursor is cleaved by a furin endopeptidase.,similarity: Belongs to the peptidase M10A family.,similarity: Contains 4 hemopexin-like domains.,tissue specificity: Specifically expressed in stromal cells of breast carcinomas.,

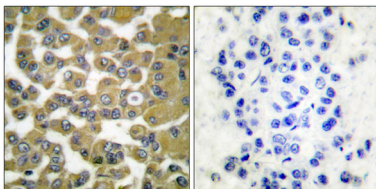
## Research Area

Angiogenesis

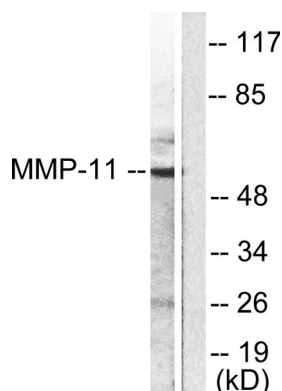
## Image Data



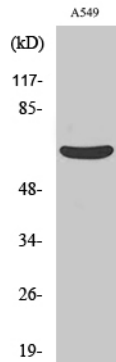
Immunofluorescence analysis of A549 cells, using MMP-11 Antibody. The picture on the right is blocked with the synthesized peptide.



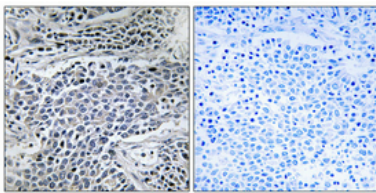
Immunohistochemistry analysis of paraffin-embedded human breast carcinoma tissue, using MMP-11 Antibody. The picture on the right is blocked with the synthesized peptide.



Western blot analysis of lysates from A549 cells, using MMP-11 Antibody. The lane on the right is blocked with the synthesized peptide.



Western Blot analysis of various cells using MMP-11 Polyclonal Antibody diluted at 1: 500



Immunohistochemical analysis of paraffin-embedded Human lung cancer. Antibody was diluted at 1:100 ( 4°,overnight ) . High-pressure and temperature Tris-EDTA,pH8.0 was used for antigen retrieval. Negative contrl (right) obtaned from antibody was pre-absorbed by immunogen peptide.