

Product Name: MLL2 Rabbit Polyclonal Antibody**Catalog #: APRab13960**

For research use only.

Summary

Description	Rabbit polyclonal Antibody
Host	Rabbit
Application	IHC, ICC/IF
Reactivity	Human, Rat, Mouse
Conjugation	Unconjugated
Modification	Unmodified
Isotype	IgG
Clonality	Polyclonal
Form	Liquid
Concentration	1mg/ml
Storage	Aliquot and store at -20°C (valid for 12 months). Avoid freeze/thaw cycles.
Shipping	Ice bags
Buffer	Liquid in PBS containing 50% glycerol, and 0.02% New type preservative N.
Purification	Affinity purification

Application

Dilution Ratio	IHC 1:50-1:300, ICC/IF 1:50-1:200
Molecular Weight	609kDa

Antigen Information

Gene Name	MLL2
Alternative Names	ALR KMT2D MLL4
Gene ID	8085.0
SwissProt ID	O14686
Immunogen	Synthesized peptide derived from human protein . at AA range: 1430-1510

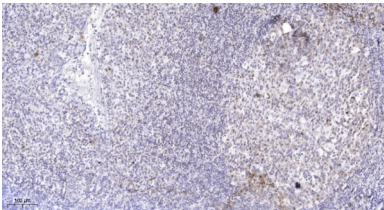
Background

The protein encoded by this gene is a histone methyltransferase that methylates the Lys-4 position of histone H3. The encoded protein is part of a large protein complex called ASCOM, which has been shown to be a transcriptional regulator of the beta-globin and estrogen receptor genes. Mutations in this gene have been shown to be a cause of Kabuki syndrome. [provided by

RefSeq, Oct 2010],catalytic activity:S-adenosyl-L-methionine + histone L-lysine = S-adenosyl-L-homocysteine + histone N(6)-methyl-L-lysine.,domain:LXXLL motifs 5 and 5 are essential for the association with ESR1 nuclear receptor.,function:Histone methyltransferase. Methylates 'Lys-4' of histone H3. H3 'Lys-4' methylation represents a specific tag for epigenetic transcriptional activation. Plays a central role in beta-globin locus transcription regulation by being recruited by NFE2. Acts as a coactivator for estrogen receptor by being recruited by ESR1, thereby activating transcription.,miscellaneous:This gene mapped to a chromosomal region involved in duplications and translocations associated with cancer.,PTM:Phosphorylated upon DNA damage, probably by ATM or ATR.,similarity:Belongs to the histone-lysine methyltransferase family. TRX/MLL subfamily.,similarity:Contains 1 post-SET domain.,similarity:Contains 1 RING-type zinc finger.,similarity:Contains 1 SET domain.,similarity:Contains 5 PHD-type zinc fingers.,subunit:Component of the MLL2/MLL3 complex (also named ASCOM complex), at least composed of MLL2, MLL3, ASH2L, RBBP5, DPY30, NCOA6, WDR5, MEN1, KDM6A and PAXIP1/PTIP. Interacts with NFE2. Interacts with ESR1; interaction is direct.,tissue specificity:Expressed in most adult tissues, including a variety of hematopoietic cells, with the exception of the liver.,

Research Area

Image Data



Immunohistochemical analysis of paraffin-embedded human tonsil. 1, Antibody was diluted at 1:200 (4° overnight) . 2, Tris-EDTA,pH9.0 was used for antigen retrieval. 3,Secondary antibody was diluted at 1:200 (room temperature, 45min) .