
Product Name: MLC-2 Rabbit Polyclonal Antibody**Catalog #: APRab13941**

For research use only.

Summary

| | |
|----------------------|---|
| Description | Rabbit polyclonal Antibody |
| Host | Rabbit |
| Application | IHC,ICC/IF,ELISA |
| Reactivity | Human,Mouse,Rat |
| Conjugation | Unconjugated |
| Modification | Unmodified |
| Isotype | IgG |
| Clonality | Polyclonal |
| Form | Liquid |
| Concentration | 1mg/ml |
| Storage | Aliquot and store at -20°C (valid for 12 months). Avoid freeze/thaw cycles. |
| Shipping | Ice bags |
| Buffer | Liquid in PBS containing 50% glycerol, 0.5% protective protein and 0.02% New type preservative N. |
| Purification | Affinity purification |

Application

Dilution Ratio IHC 1:100-1:300,ICC/IF 1:200-1:1000,ELISA 1:5000-1:10000

Molecular Weight

Antigen Information

| | |
|--------------------------|---|
| Gene Name | MYL12A MYL12A; MLCB; MRCL3; RLC; Myosin regulatory light chain 12A; MLC-2B; Myosin RLC; |
| Alternative Names | Myosin regulatory light chain 2; nonsarcomeric; Myosin regulatory light chain MRCL3; MYL12B; MRCL2; MYLC2B; Myosin regulatory light chain 12B; MLC-2A; MLC-2; M |
| Gene ID | 10398/10627 |
| SwissProt ID | P19105/O14950/P24844 |
| Immunogen | The antiserum was produced against synthesized peptide derived from human MLC-2. AA range:5-54 |

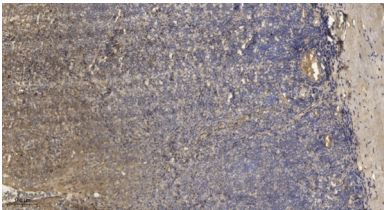
Background

This gene encodes a nonsarcomeric myosin regulatory light chain. This protein is activated by phosphorylation and regulates smooth muscle and non-muscle cell contraction. This protein may also be involved in DNA damage repair by sequestering the transcriptional regulator apoptosis-antagonizing transcription factor (AATF)/Che-1 which functions as a repressor of p53-driven apoptosis. Alternate splicing results in multiple transcript variants. A pseudogene of this gene is found on chromosome 8.[provided by RefSeq, Dec 2014],function:Myosin regulatory subunit that plays an important role in regulation of both smooth muscle and nonmuscle cell contractile activity via its phosphorylation. Implicated in cytokinesis, receptor capping, and cell locomotion.,miscellaneous:This chain binds calcium.,PTM:Phosphorylation increases the actin-activated myosin ATPase activity and thereby regulates the contractile activity. It is required to generate the driving force in the migration of the cells but not necessary for localization of myosin-2 at the leading edge.,similarity:Contains 3 EF-hand domains.,subunit:Myosin is an hexamer of 2 heavy chains and 4 light chains.,

Research Area

Focal adhesion;Tight junction;Leukocyte transendothelial migration;Regulates Actin and Cytoskeleton;

Image Data



Immunohistochemical analysis of paraffin-embedded human tonsil. 1, Antibody was diluted at 1:200 (4° overnight) . 2, Tris-EDTA,pH9.0 was used for antigen retrieval. 3,Secondary antibody was diluted at 1:200 (room temperature, 30min) .