

Product Name: MIXL1 Rabbit Polyclonal Antibody**Catalog #: APRab13922**

For research use only.

Summary

Description	Rabbit polyclonal Antibody
Host	Rabbit
Application	WB,ELISA
Reactivity	Human,Mouse
Conjugation	Unconjugated
Modification	Unmodified
Isotype	IgG
Clonality	Polyclonal
Form	Liquid
Concentration	1mg/ml
Storage	Aliquot and store at -20°C (valid for 12 months). Avoid freeze/thaw cycles.
Shipping	Ice bags
Buffer	Liquid in PBS containing 50% glycerol, and 0.02% New type preservative N.
Purification	Affinity purification

Application

Dilution Ratio	WB 1:500-1:2000,ELISA 1:5000-1:20000
Molecular Weight	25kDa

Antigen Information

Gene Name	MIXL1 MIXL
Alternative Names	
Gene ID	83881.0
SwissProt ID	Q9H2W2
Immunogen	Synthesized peptide derived from human protein . at AA range: 90-170

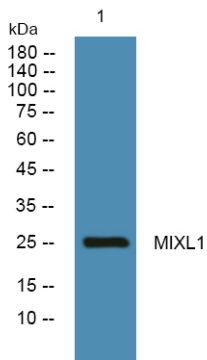
Background

Mix paired-like homeobox(MIXL1) Homo sapiens Homeodomain proteins, such as MIXL1, are transcription factors that regulate cell fate during development (Hart et al., 2005 [PubMed 15982639]).[supplied by OMIM, Mar 2008],function:Transcription factor that play a central role in proper axial mesendoderm morphogenesis and endoderm

formation. Required for efficient differentiation of cells from the primitive streak stage to blood, by acting early in the recruitment and/or expansion of mesodermal progenitors to the hemangioblastic and hematopoietic lineages. Also involved in the morphogenesis of the heart and the gut during embryogenesis. Acts as a negative regulator of brachyury expression.,PTM:Phosphorylated at multiple sites.,similarity:Belongs to the paired homeobox family.,similarity:Contains 1 homeobox DNA-binding domain.,tissue specificity:Restricted to progenitors and secondary lymph tissues. In normal hematopoiesis, it is restricted to immature B-and T-lymphoid cells. Present in differentiating embryonic stem cells (at protein level),.

Research Area

Image Data



Western blot analysis of lysates from PC12 cells, MIXL1 Rabbit Polyclonal Antibody was diluted at 1:1000, 4° over night