

**Product Name: MIP-1 $\beta$  Rabbit Polyclonal Antibody****Catalog #: APRab13909**

For research use only.

**Summary**

|                      |   |
|----------------------|---|
| <b>Description</b>   | Rabbit polyclonal Antibody  |
| <b>Host</b>          | Rabbit  |
| <b>Application</b>   | WB,IHC  |
| <b>Reactivity</b>    | Human,Rat,Mouse   |
| <b>Conjugation</b>   | Unconjugated  |
| <b>Modification</b>  | Unmodified  |
| <b>Isotype</b>       | IgG   |
| <b>Clonality</b>     | Polyclonal  |
| <b>Form</b>          | Liquid  |
| <b>Concentration</b> | 1mg/ml  |
| <b>Storage</b>       | Aliquot and store at -20°C (valid for 12 months). Avoid freeze/thaw cycles.                       |
| <b>Shipping</b>      | Ice bags  |
| <b>Buffer</b>        | Liquid in PBS containing 50% glycerol, 0.5% protective protein and 0.02% New type preservative N. |
| <b>Purification</b>  | Affinity purification   |

**Application**

|                         |                                |
|-------------------------|--------------------------------|
| <b>Dilution Ratio</b>   | WB 1:500-1:2000,IHC 1:50-1:300 |
| <b>Molecular Weight</b> | 16kDa                          |

**Antigen Information**

|                          |  |
|--------------------------|--|
| <b>Gene Name</b>         | CCL4   |
| <b>Alternative Names</b> | CCL4; LAG1; MIP1B; SCYA4; C-C motif chemokine 4; G-26 T-lymphocyte-secreted protein; HC21; Lymphocyte activation gene 1 protein; LAG-1; MIP-1-beta(1-69);Macrophage inflammatory protein 1-beta; MIP-1-beta; PAT 744; Protein H400; SIS-gamma; Small-inducible cytokine A4; T-cell activation protein 2; ACT-2 |
| <b>Gene ID</b>           | 388372.0   |
| <b>SwissProt ID</b>      | P13236   |
| <b>Immunogen</b>         | The antiserum was produced against synthesized peptide derived from the Internal region of human CCL4. AA range:41-90  |

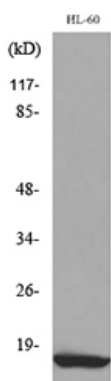
## Background

The protein encoded by this gene is a mitogen-inducible monokine and is one of the major HIV-suppressive factors produced by CD8+ T-cells. The encoded protein is secreted and has chemokinetic and inflammatory functions. [provided by RefSeq, Dec 2012],alternative products:CCL4L1 and CCL4L2 genes differ in their non-coding regions. Thus, alternative splicing events differ between the two genes,caution:Was originally (PubMed:9521068) thought to be a ligand for CCR8.,function:Chemokine that induces chemotaxis of cells expressing CCR5 or CCR1. Inhibits HIV replication in peripheral blood monocytes that express CCR5.,function:Monokine with inflammatory and chemokinetic properties. Binds to CCR5. One of the major HIV-suppressive factors produced by CD8+ T-cells. Recombinant MIP-1-beta induces a dose-dependent inhibition of different strains of HIV-1, HIV-2, and simian immunodeficiency virus (SIV). The processed form MIP-1-beta(3-69) retains the abilities to induce down-modulation of surface expression of the chemokine receptor CCR5 and to inhibit the CCR5-mediated entry of HIV-1 in T-cells. MIP-1-beta(3-69) is also a ligand for CCR1 and CCR2 isoform B.,induction:By mitogens.,online information:Macrophage inflammatory protein entry,polymorphism:The copy number of the CC4L1 gene varies among individuals; most individuals have 1 to 6 copies in the diploid genome.,PTM:N-terminal processed form MIP-1-beta(3-69) is produced by proteolytic cleavage after secretion from peripheral blood lymphocytes.,similarity:Belongs to the intercrine beta (chemokine CC) family.,subunit:Homodimer and heterodimer of MIP-1-alpha(4-69) and MIP-1-beta(3-69),subunit:Interacts with CCR5.,tissue specificity:Detected in B-cells.,

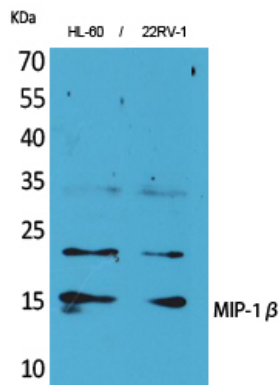
## Research Area

TGF-beta signaling pathway

## Image Data



Western blot analysis of lysate from HL-60 cells, using CCL4 Antibody.



Western Blot analysis of HL-60, 22RV-1 cells using MIP-1 $\beta$  Polyclonal Antibody..  
Secondary antibody was diluted at 1:20000