

---

**Product Name: MIP-1 $\alpha$  Rabbit Polyclonal Antibody****Catalog #: APRab13908**

For research use only.

**Summary**

<b>Description</b>	Rabbit polyclonal Antibody
<b>Host</b>	Rabbit
<b>Application</b>	IHC,ICC/IF,ELISA
<b>Reactivity</b>	Human,Rat,Mouse
<b>Conjugation</b>	Unconjugated
<b>Modification</b>	Unmodified
<b>Isotype</b>	IgG
<b>Clonality</b>	Polyclonal
<b>Form</b>	Liquid
<b>Concentration</b>	1mg/ml
<b>Storage</b>	Aliquot and store at -20°C (valid for 12 months). Avoid freeze/thaw cycles.
<b>Shipping</b>	Ice bags
<b>Buffer</b>	Liquid in PBS containing 50% glycerol, 0.5% protective protein and 0.02% New type preservative N.
<b>Purification</b>	Affinity purification

**Application**

**Dilution Ratio** IHC 1:100-1:300,ICC/IF 1:50-1:200,ELISA 1:10000-1:20000

**Molecular Weight**

**Antigen Information**

<b>Gene Name</b>	CCL3 CCL3; G0S19-1; MIP1A; SCYA3; C-C motif chemokine 3; G0/G1 switch regulatory protein 19-
<b>Alternative Names</b>	1; Macrophage inflammatory protein 1-alpha; MIP-1-alpha; PAT 464.1; SIS-beta; Small-inducible cytokine A3; Tonsillar lymphocyte LD78 alpha protein
<b>Gene ID</b>	6348.0
<b>SwissProt ID</b>	P10147
<b>Immunogen</b>	The antiserum was produced against synthesized peptide derived from human MIP-1alpha. AA range:26-75

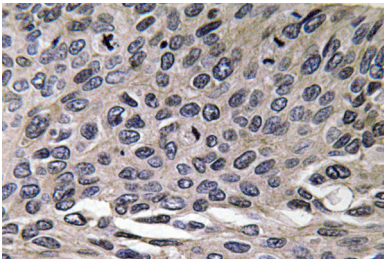
## Background

This locus represents a small inducible cytokine. The encoded protein, also known as macrophage inflammatory protein 1 alpha, plays a role in inflammatory responses through binding to the receptors CCR1, CCR4 and CCR5. Polymorphisms at this locus may be associated with both resistance and susceptibility to infection by human immunodeficiency virus type 1.[provided by RefSeq, Sep 2010],function:Monokine with inflammatory and chemokinetic properties. Binds to CCR1, CCR4 and CCR5. One of the major HIV-suppressive factors produced by CD8+ T-cells. Recombinant MIP-1-alpha induces a dose-dependent inhibition of different strains of HIV-1, HIV-2, and simian immunodeficiency virus (SIV),,induction:By TPA or PHA (TPA = 12-O-tetradecanoyl phorbol-13 acetate (tumor promoter); PHA = phytohemagglutinin (T-cell mitogen)),,online information:Macrophage inflammatory protein entry,PTM:N-terminal processed form LD78-alpha(4-69) is produced by proteolytic cleavage after secretion from HTLV1-transformed T-cells.,similarity:Belongs to the intercrine beta (chemokine CC) family.,subunit:Self-associates. Also heterodimer of MIP-1-alpha(4-69) and MIP-1-beta(3-69),.

## Research Area

Cytokine-cytokine receptor interaction;Chemokine;Toll\_Like;

## Image Data



Immunohistochemistry analysis of MIP-1 $\alpha$  antibody in paraffin-embedded human lung carcinoma tissue.