

---

**Product Name: Mic-1 Rabbit Polyclonal Antibody****Catalog #: APRab13888**

For research use only.

**Summary**

<b>Description</b>	Rabbit polyclonal Antibody
<b>Host</b>	Rabbit
<b>Application</b>	WB,IHC,ELISA
<b>Reactivity</b>	Human,Mouse
<b>Conjugation</b>	Unconjugated
<b>Modification</b>	Unmodified
<b>Isotype</b>	IgG
<b>Clonality</b>	Polyclonal
<b>Form</b>	Liquid
<b>Concentration</b>	1mg/ml
<b>Storage</b>	Aliquot and store at -20°C (valid for 12 months). Avoid freeze/thaw cycles.
<b>Shipping</b>	Ice bags
<b>Buffer</b>	Liquid in PBS containing 50% glycerol, 0.5% protective protein and 0.02% New type preservative N.
<b>Purification</b>	Affinity purification

**Application**

<b>Dilution Ratio</b>	WB 1:500-1:2000,IHC 1:50-1:300,ELISA 1:2000-1:20000
<b>Molecular Weight</b>	75kDa

**Antigen Information**

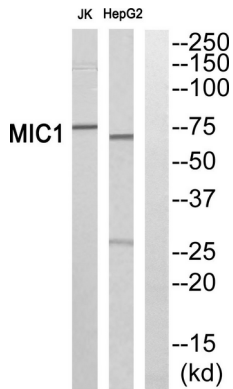
<b>Gene Name</b>	C18orf8
<b>Alternative Names</b>	C18orf8; MIC1; Uncharacterized protein C18orf8; Colon cancer-associated protein Mic1; Mic-1
<b>Gene ID</b>	29919.0
<b>SwissProt ID</b>	Q96DM3
<b>Immunogen</b>	The antiserum was produced against synthesized peptide derived from human MIC1. AA range:591-640

**Background**

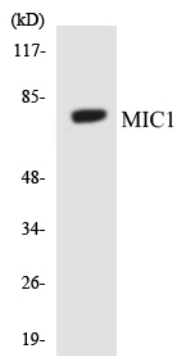
This gene encodes a colon cancer associated protein. [provided by RefSeq, Jan 2013],similarity:Contains 1 Mic1 domain.,

## Research Area

## Image Data



Western blot analysis of MIC1 Antibody. The lane on the right is blocked with the MIC1 peptide.



Western blot analysis of the lysates from HeLa cells using MIC1 antibody.