
Product Name: MIA Rabbit Polyclonal Antibody**Catalog #: APRab13881**

For research use only.

Summary

Description	Rabbit polyclonal Antibody
Host	Rabbit
Application	IHC,ICC/IF,ELISA
Reactivity	Human,Mouse,Rat
Conjugation	Unconjugated
Modification	Unmodified
Isotype	IgG
Clonality	Polyclonal
Form	Liquid
Concentration	1mg/ml
Storage	Aliquot and store at -20°C (valid for 12 months). Avoid freeze/thaw cycles.
Shipping	Ice bags
Buffer	Liquid in PBS containing 50% glycerol, 0.5% protective protein and 0.02% New type preservative N.
Purification	Affinity purification

Application

Dilution Ratio IHC 1:100-1:300,ICC/IF 1:50-1:200,ELISA 1:20000-1:40000

Molecular Weight

Antigen Information

Gene Name	MIA
Alternative Names	MIA; Melanoma-derived growth regulatory protein; Melanoma inhibitory activity protein
Gene ID	8190.0
SwissProt ID	Q16674
Immunogen	The antiserum was produced against synthesized peptide derived from human MIA. AA range:82-131

Background

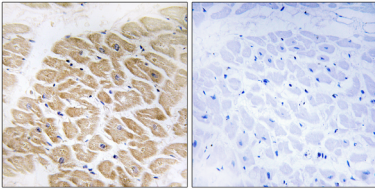
function:Elicits growth inhibition on melanoma cells in vitro as well as some other neuroectodermal tumors, including

gliomas.,PTM:May possess two intramolecular disulfide bonds.,similarity:Belongs to the MIA/OTOR family.,similarity:Contains 1 SH3 domain.,tissue specificity:All malignant melanoma cell lines tested and infrequently in glioma cell lines.,function:Elicits growth inhibition on melanoma cells in vitro as well as some other neuroectodermal tumors, including gliomas.,PTM:May possess two intramolecular disulfide bonds.,similarity:Belongs to the MIA/OTOR family.,similarity:Contains 1 SH3 domain.,tissue specificity:All malignant melanoma cell lines tested and infrequently in glioma cell lines.,

Research Area

Signal Transduction

Image Data



Immunohistochemistry analysis of paraffin-embedded human heart tissue, using MIA Antibody. The picture on the right is blocked with the synthesized peptide.