
Product Name: mGluR2 Rabbit Polyclonal Antibody**Catalog #: APRab13859**

For research use only.

Summary

Description	Rabbit polyclonal Antibody
Host	Rabbit
Application	IHC,ICC/IF,ELISA
Reactivity	Human,Mouse,Rat
Conjugation	Unconjugated
Modification	Unmodified
Isotype	IgG
Clonality	Polyclonal
Form	Liquid
Concentration	1mg/ml
Storage	Aliquot and store at -20°C (valid for 12 months). Avoid freeze/thaw cycles.
Shipping	Ice bags
Buffer	Liquid in PBS containing 50% glycerol, 0.5% protective protein and 0.02% New type preservative N.
Purification	Affinity purification

Application

Dilution Ratio IHC 1:100-1:300,ICC/IF 1:200-1:1000,ELISA 1:5000-1:10000

Molecular Weight

Antigen Information

Gene Name	GRM2
Alternative Names	GRM2; GPRC1B; MGLUR2; Metabotropic glutamate receptor 2; mGluR2
Gene ID	2912.0
SwissProt ID	Q14416
Immunogen	The antiserum was produced against synthesized peptide derived from human GRM2. AA range:241-290

Background

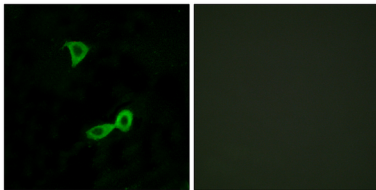
glutamate metabotropic receptor 2(GRM2) Homo sapiens L-glutamate is the major excitatory neurotransmitter in the central

nervous system and activates both ionotropic and metabotropic glutamate receptors. Glutamatergic neurotransmission is involved in most aspects of normal brain function and can be perturbed in many neuropathologic conditions. The metabotropic glutamate receptors are a family of G protein-coupled receptors, that have been divided into 3 groups on the basis of sequence homology, putative signal transduction mechanisms, and pharmacologic properties. Group I includes GRM1 and GRM5 and these receptors have been shown to activate phospholipase C. Group II includes GRM2 and GRM3 while Group III includes GRM4, GRM6, GRM7 and GRM8. Group II and III receptors are linked to the inhibition of the cyclic AMP cascade but differ in their agonist selectivities. Two transcript variants encoding different isoforms have been found for this gene: Receptor for glutamate. The activity of this receptor is mediated by a G-protein that inhibits adenylate cyclase activity. May mediate suppression of neurotransmission or may be involved in synaptogenesis or synaptic stabilization. Similarity: Belongs to the G-protein coupled receptor 3 family. Subunit: Interacts with GRASP. Tissue specificity: Widely expressed in different regions of the adult brain as well as in fetal brain.

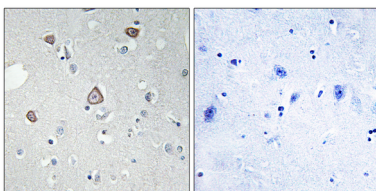
Research Area

Neuroactive ligand-receptor interaction;

Image Data



Immunofluorescence analysis of LOVO cells, using GRM2 Antibody. The picture on the right is blocked with the synthesized peptide.



Immunohistochemistry analysis of paraffin-embedded human brain tissue, using GRM2 Antibody. The picture on the right is blocked with the synthesized peptide.