

---

**Product Name: MerTK/Tyro3 Rabbit Polyclonal Antibody****Catalog #: APRab13826**

For research use only.

**Summary**

<b>Description</b>	Rabbit polyclonal Antibody
<b>Host</b>	Rabbit
<b>Application</b>	WB,IHC,ICC/IF,ELISA
<b>Reactivity</b>	Human,Mouse,Rat
<b>Conjugation</b>	Unconjugated
<b>Modification</b>	Unmodified
<b>Isotype</b>	IgG
<b>Clonality</b>	Polyclonal
<b>Form</b>	Liquid
<b>Concentration</b>	1mg/ml
<b>Storage</b>	Aliquot and store at -20°C (valid for 12 months). Avoid freeze/thaw cycles.
<b>Shipping</b>	Ice bags
<b>Buffer</b>	Liquid in PBS containing 50% glycerol, 0.5% protective protein and 0.02% New type preservative N.
<b>Purification</b>	Affinity purification

**Application**

<b>Dilution Ratio</b>	WB 1:500-1:2000,IHC 1:100-1:300,ICC/IF 1:50-1:200,ELISA 1:10000-1:20000
<b>Molecular Weight</b>	97kDa

**Antigen Information**

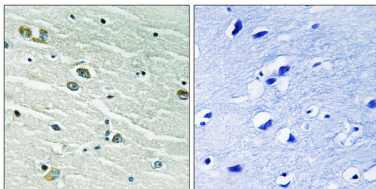
<b>Gene Name</b>	MERTK/TYRO3 MERTK; MER; Tyrosine-protein kinase Mer; Proto-oncogene c-Mer; Receptor tyrosine kinase
<b>Alternative Names</b>	MerTK; TYRO3; BYK; DTK; RSE; SKY; Tyrosine-protein kinase receptor TYRO3; Tyrosine-protein kinase DTK; Tyrosine-protein kinase RSE; Tyrosine-protein kin
<b>Gene ID</b>	10461/7301
<b>SwissProt ID</b>	Q12866/Q06418
<b>Immunogen</b>	The antiserum was produced against synthesized peptide derived from human MER/SKY. AA range:716-765

## Background

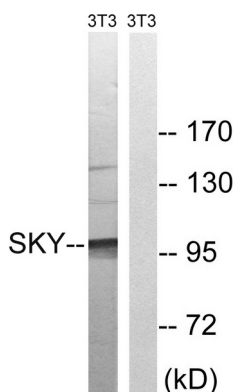
This gene is a member of the MER/AXL/TYRO3 receptor kinase family and encodes a transmembrane protein with two fibronectin type-III domains, two Ig-like C2-type (immunoglobulin-like) domains, and one tyrosine kinase domain. Mutations in this gene have been associated with disruption of the retinal pigment epithelium (RPE) phagocytosis pathway and onset of autosomal recessive retinitis pigmentosa (RP). [provided by RefSeq, Jul 2008],catalytic activity:ATP + a [protein]-L-tyrosine = ADP + a [protein]-L-tyrosine phosphate.,disease:Defects in MERTK are a cause of retinitis pigmentosa (RP) [MIM:268000]. RP that leads to degeneration of retinal photoreceptor cells. Patients typically have night vision blindness and loss of midperipheral visual field. As their condition progresses, they lose their far peripheral visual field and eventually central vision as well.,function:In case of filovirus infection, seems to function as a cell entry factor.,online information:Retina International's Scientific Newsletter,similarity:Belongs to the protein kinase superfamily. Tyr protein kinase family.,similarity:Belongs to the protein kinase superfamily. Tyr protein kinase family. AXL/UFO subfamily.,similarity:Contains 1 protein kinase domain.,similarity:Contains 2 fibronectin type-III domains.,similarity:Contains 2 Ig-like C2-type (immunoglobulin-like) domains.,tissue specificity:Not expressed in normal B- and T-lymphocytes but is expressed in numerous neoplastic B- and T-cell lines.,

## Research Area

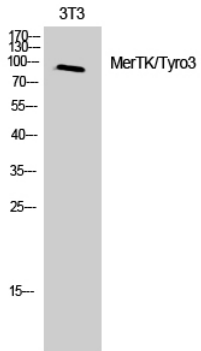
### Image Data



Immunohistochemistry analysis of paraffin-embedded human brain tissue, using MER/SKY Antibody. The picture on the right is blocked with the synthesized peptide.



Western blot analysis of lysates from NIH/3T3 cells, treated with EGF 200ng/ml 5', using MER/SKY Antibody. The lane on the right is blocked with the synthesized peptide.



Western Blot analysis of 3T3 cells using MerTK/Tyro3 Polyclonal Antibody