

---

**Product Name: Melan-A Rabbit Polyclonal Antibody****Catalog #: APRab13814**

For research use only.

**Summary**

<b>Description</b>	Rabbit polyclonal Antibody
<b>Host</b>	Rabbit
<b>Application</b>	WB,IHC,ICC/IF,ELISA
<b>Reactivity</b>	Human,Rat,Mouse
<b>Conjugation</b>	Unconjugated
<b>Modification</b>	Unmodified
<b>Isotype</b>	IgG
<b>Clonality</b>	Polyclonal
<b>Form</b>	Liquid
<b>Concentration</b>	1mg/ml
<b>Storage</b>	Aliquot and store at -20°C (valid for 12 months). Avoid freeze/thaw cycles.
<b>Shipping</b>	Ice bags
<b>Buffer</b>	Liquid in PBS containing 50% glycerol, 0.5% protective protein and 0.02% New type preservative N.
<b>Purification</b>	Affinity purification

**Application**

<b>Dilution Ratio</b>	WB 1:500-1:2000,IHC 1:100-1:300,ICC/IF 1:50-1:200,ELISA 1:20000-1:40000
<b>Molecular Weight</b>	15kDa

**Antigen Information**

<b>Gene Name</b>	MLANA
<b>Alternative Names</b>	MLANA; MART1; Melanoma antigen recognized by T-cells 1; MART-1; Antigen LB39-AA; Antigen SK29-AA; Protein Melan-A
<b>Gene ID</b>	2315.0
<b>SwissProt ID</b>	Q16655
<b>Immunogen</b>	The antiserum was produced against synthesized peptide derived from human MART-1. AA range:41-90

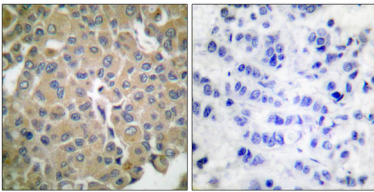
**Background**

tissue specificity:Expression is restricted to melanoma and melanocyte cell lines and retina.,tissue specificity:Expression is restricted to melanoma and melanocyte cell lines and retina.,

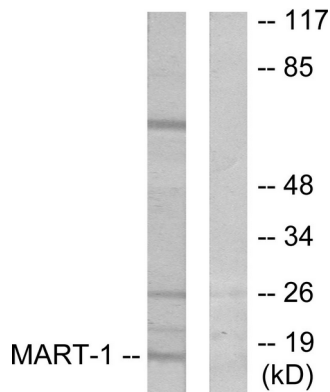
## Research Area

Tags & Cell Markers; Cell Type Markers; Tumor Associated; Cancer; Tumor immunology; Tumor-associated antigens

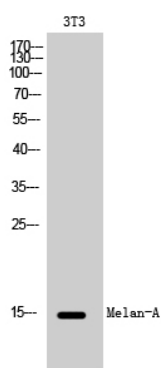
## Image Data



Immunohistochemistry analysis of paraffin-embedded human breast carcinoma tissue, using MART-1 Antibody. The picture on the right is blocked with the synthesized peptide.



Western blot analysis of lysates from NIH/3T3 cells, using MART-1 Antibody. The lane on the right is blocked with the synthesized peptide.



Western Blot analysis of 3T3 cells using Melan-A Polyclonal Antibody