

Product Name: MEL-1B-R Rabbit Polyclonal Antibody**Catalog #: APRab13813**

For research use only.

Summary

Description	Rabbit polyclonal Antibody
Host	Rabbit
Application	WB,IHC
Reactivity	Human,Rat,Mouse
Conjugation	Unconjugated
Modification	Unmodified
Isotype	IgG
Clonality	Polyclonal
Form	Liquid
Concentration	1mg/ml
Storage	Aliquot and store at -20°C (valid for 12 months). Avoid freeze/thaw cycles.
Shipping	Ice bags
Buffer	Liquid in PBS containing 50% glycerol, 0.5% protective protein and 0.02% New type preservative N.
Purification	Affinity purification

Application

Dilution Ratio	WB 1:500-1:2000,IHC 1:50-1:300
Molecular Weight	40kDa

Antigen Information

Gene Name	MTNR1B
Alternative Names	MTNR1B; Melatonin receptor type 1B; Mel-1B-R; Mel1b receptor
Gene ID	4544.0
SwissProt ID	P49286
Immunogen	The antiserum was produced against synthesized peptide derived from human MTR1B. AA range:301-350

Background

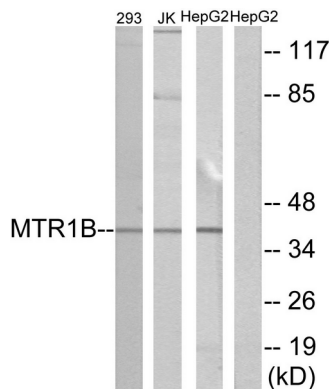
This gene encodes one of two high affinity forms of a receptor for melatonin, the primary hormone secreted by the pineal

gland. This gene product is an integral membrane protein that is a G-protein coupled, 7-transmembrane receptor. It is found primarily in the retina and brain although this detection requires RT-PCR. It is thought to participate in light-dependent functions in the retina and may be involved in the neurobiological effects of melatonin. [provided by RefSeq, Jul 2008],function:High affinity receptor for melatonin. Likely to mediate the reproductive and circadian actions of melatonin. The activity of this receptor is mediated by pertussis toxin sensitive G proteins that inhibit adenylate cyclase activity.,online information:Melatonin receptor entry,similarity:Belongs to the G-protein coupled receptor 1 family.,tissue specificity:Expressed in retina and less in brain and hippocampus.,

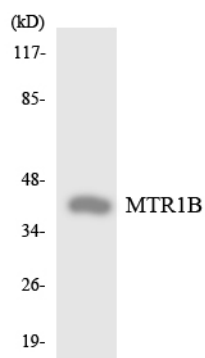
Research Area

Neuroactive ligand-receptor interaction;

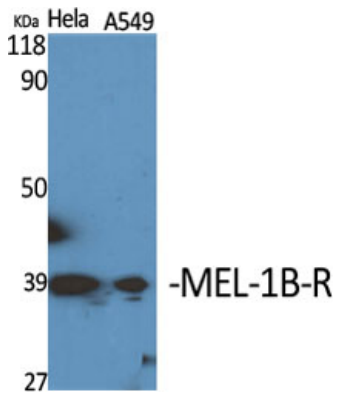
Image Data



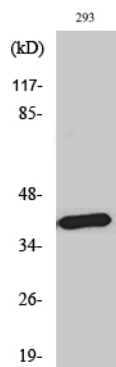
Western blot analysis of lysates from 293, Jurkat, and HepG2 cells, using MTR1B Antibody. The lane on the right is blocked with the synthesized peptide.



Western blot analysis of the lysates from HeLa cells using MTR1B antibody.



Western Blot analysis of various cells using MEL-1B-R Polyclonal Antibody diluted at 1: 1000



Western Blot analysis of HepG2 cells using MEL-1B-R Polyclonal Antibody diluted at 1: 1000