
Product Name: MEK-7 Rabbit Polyclonal Antibody**Catalog #: APRab13810**

For research use only.

Summary

| | |
|----------------------|---|
| Description | Rabbit polyclonal Antibody |
| Host | Rabbit |
| Application | WB,IHC |
| Reactivity | Human,Mouse,Rat |
| Conjugation | Unconjugated |
| Modification | Unmodified |
| Isotype | IgG |
| Clonality | Polyclonal |
| Form | Liquid |
| Concentration | 1mg/ml |
| Storage | Aliquot and store at -20°C (valid for 12 months). Avoid freeze/thaw cycles. |
| Shipping | Ice bags |
| Buffer | Liquid in PBS containing 50% glycerol, 0.5% protective protein and 0.02% New type preservative N. |
| Purification | Affinity purification |

Application

| | |
|-------------------------|--------------------------------|
| Dilution Ratio | WB 1:500-1:2000,IHC 1:50-1:300 |
| Molecular Weight | 47kDa |

Antigen Information

| | |
|--------------------------|---|
| Gene Name | MAP2K7 MAP2K7; JNKK2; MEK7; MKK7; PRKMK7; SKK4; Dual specificity mitogen-activated protein |
| Alternative Names | kinase kinase 7; MAP kinase kinase 7; MAPKK 7; JNK-activating kinase 2; MAPK/ERK kinase 7; MEK 7; Stress-activated protein kinase kinase 4; SAPK kinase 4; S |
| Gene ID | 5609.0 |
| SwissProt ID | O14733 |
| Immunogen | The antiserum was produced against synthesized peptide derived from human MAP2K7. AA range:241-290 |

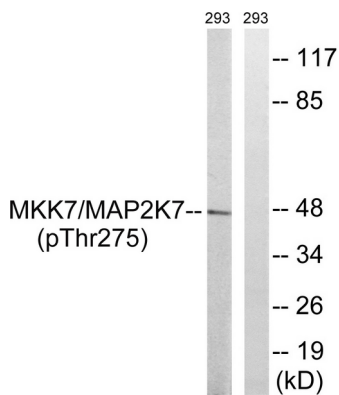
Background

The protein encoded by this gene is a dual specificity protein kinase that belongs to the MAP kinase kinase family. This kinase specifically activates MAPK8/JNK1 and MAPK9/JNK2, and this kinase itself is phosphorylated and activated by MAP kinase kinase kinases including MAP3K1/MEKK1, MAP3K2/MEKK2, MAP3K3/MEKK5, and MAP4K2/GCK. This kinase is involved in the signal transduction mediating the cell responses to proinflammatory cytokines, and environmental stresses. Alternative splicing results in multiple transcript variants. [provided by RefSeq, Jul 2014], catalytic activity: ATP + a protein = ADP + a phosphoprotein., cofactor: Magnesium., enzyme regulation: Activated by phosphorylation by specific MAP kinase kinase kinases such as MAP3K1/MEKK1, MAP3K3/MEKK3, MAP3K11/MLK3 and MAP3K12/DLK., function: Stress activated, dual specificity kinase that activates the JUN kinases MAPK8/JNK1, MAPK9/JNK2 and MAPK10/JNK3., PTM: Activated by phosphorylation on Ser/Thr., similarity: Belongs to the protein kinase superfamily. STE Ser/Thr protein kinase family. MAP kinase kinase subfamily., similarity: Contains 1 protein kinase domain., tissue specificity: Ubiquitous; with highest level of expression in skeletal muscle. Isoform 3 is found at low levels in placenta, fetal liver, and skeletal muscle.,

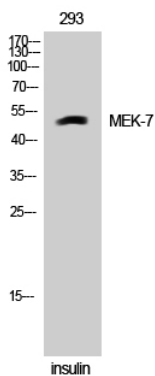
Research Area

MAPK_ERK_Growth; MAPK_G_Protein; ErbB_HER; Toll_Like; T_Cell_Receptor; Fc_epsilon RI; Neurotrophin; GnRH;

Image Data



Western blot analysis of lysates from 293 cells treated with insulin 0.01U/ml 15', using MAP2K7 Antibody. The lane on the right is blocked with the synthesized peptide.



Western Blot analysis of 293 cells using MEK-7 Polyclonal Antibody